



Blanchelande
College



**A-LEVEL
COURSES**

Contents

Principal's welcome	3
Head of Sixth Form 's welcome.....	4
THE BIG QUESTIONS	5
CHOOSING YOUR A-LEVELS.....	6
Registrar's Welcome	7
OUR A-LEVEL COURSES.....	8
ART AND DESIGN (CRAFT AND DESIGN)	9
BIOLOGY.....	11
BUSINESS STUDIES	13
CHEMISTRY.....	15
DESIGN AND TECHNOLOGY.....	18
DRAMA AND THEATRE	19
ENGLISH LITERATURE.....	21
EXTENDED PROJECT QUALIFICATION	23
GEOGRAPHY.....	24
HISTORY	27
MATHEMATICS	30
MATHEMATICAL STUDIES.....	32
MODERN FOREIGN LANGUAGES	33
FRENCH	34
SPANISH	35
MUSIC.....	36
PHOTOGRAPHY	39
PHYSICS.....	41
PSYCHOLOGY.....	43
PHYSICAL EDUCATION	45
THEOLOGY & PHILOSOPHY	47
ENRICHMENT	50
Enrichment overview	51
Post 18.....	52
UCAS	52
Employability	53
The Sixth Form Diploma	54

Thought and Culture (T&C).....	54
Sport, health & fitness.....	55
Interests	55
Academic extension.....	55
Volunteering.....	56
Trips, activities & competitions	56
Trips.....	56
Activities.....	56
Competitive opportunities	57

Principal's welcome

Dear Students and Parents,

Making the right Sixth Form decisions – particularly choosing the best subjects for you – will largely determine what you do after leaving school, whether you are entering a profession, or going on to university or higher education. Here are three important factors to consider as you make your post-16 decisions.

First: at Blanchelande, pastoral care is not an after-thought; it's the foundation stone. Blanchelande Sixth Formers belong to small tutor groups, meaning dedicated tutors ensure students' well-being on a daily basis. Our Head of Sixth Form, Sarah Moores, oversees these two tutor groups.

Second: Blanchelande students flourish academically and in their extra-curricular lives. We were delighted when, in October 2018, Blanchelande was rated 'excellent' in pupils' achievements and personal development by the Independent Schools Inspectorate; and the progress continues in our new Sixth Form provision, with the greater breadth and independence of Sixth Form life. Blanchelande offers real choice at A-Levels (as this booklet demonstrates), as well as optimal class sizes and outstanding teaching. Alongside this sits a superb Enrichment Programme, as you can see outlined in the final section of this document.



Third: Blanchelande's facilities are continually being improved, particularly for Sixth Form. Since 2017 the College has seen a new Arts Centre spring into being, with new studios for Art, Music and Drama, not to mention new sports pitches, a new A-Level Science lab and prep room, a large new Library and a brand new Sixth Form Common Room. Over the summer of 2021, we will also be creating a brand new centre for Modern Languages. For Sixth Formers driving to school, we can also offer on-site parking.

Sixth Form is the pinnacle and Blanchelande offers you a traditional, completely integrated Sixth Form experience: one school, one site, one set of teachers, and one tried-and-tested ethos that places the well-being of students at the very centre. We look forward to welcoming you.

A handwritten signature in black ink, which appears to read 'Robert O'Brien'. The signature is fluid and cursive, written in a professional style.

Robert O'Brien
Principal

Head of Sixth Form's welcome

Dear Students and Parents,

Welcome to our Sixth Form. Since opening in September, Sixth Formers have relished the wonderful opportunities made available to them. It's wonderful to see them grow in confidence and independence. The rapid evolution from a GCSE student to an inquiring, focused A-Level student is remarkable to watch.

At Blanchelande, Sixth Formers discover themselves through the narrative frame of the 'The Hero's Journey' that for Sixth Formers reaches its climax as 'the Sixth Form Odyssey' – the last phase of school education, when students really do gather up the treasure they have fought so hard to attain throughout their school years.

At Sixth Form you will be empowered to take on leadership roles and seize the initiative in setting up clubs and societies that inspire you, as well as participating in activities and competitions with other schools on island and beyond. The Sixth Form Diploma sits at the heart of our Enrichment Programme (see later in this booklet) and encourages you to develop and explore a broad range of skills to set you up for future success.

Blanchelande's highly dedicated and passionate staff will support you on the way. Your teachers will mentor you through the personal challenges of transition from Year 11 and equip you with the skills needed for A-Level study. Sixth Form is a big gear change and students need a phased introduction to its rigour, for example bridging work that follows seamlessly in the summer term once the work of GCSE is done. The focus is on the need for independent thinking and problem solving, so important at A-Level.

Best wishes,

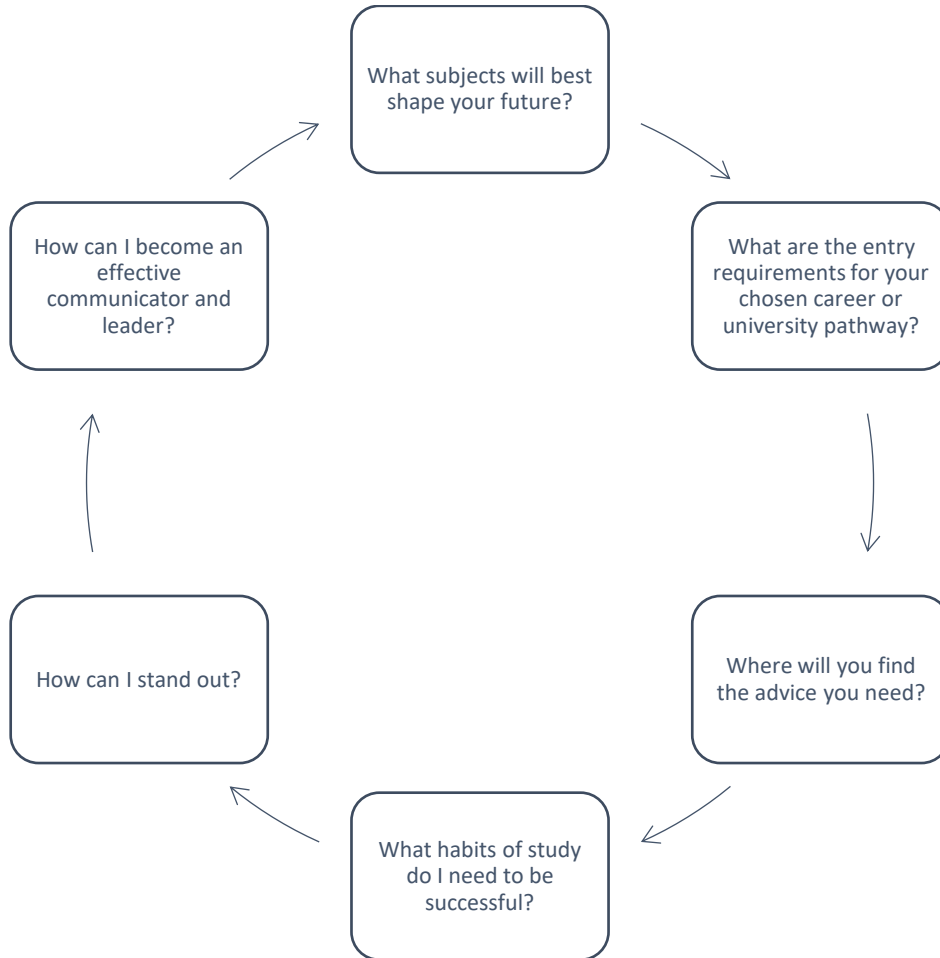


Sarah Moores
Head of Sixth Form
moore@s@blanchelande.sch.gg



THE BIG QUESTIONS

As a student surveying your post-16 options, use this diagram to help guide your thinking.



Blanchelande's Sixth Form is geared up to help you to answer each question

CHOOSING YOUR A-LEVELS

Key questions

- A-Levels require you to work more independently than you have been used to. Which subjects are you most enthused to study?
- A-Levels are rigorous. Which subjects do you get your best grades in?
- What are your intentions for work or university?

Follow your passion

Not everyone has a fixed career plan at this stage and many change professions during the course of their life. Start with what you enjoy and what drives you most. Don't be tempted to copy someone else's pathway; it might not be the best one for you.

Research

Read through the subject specific information in this booklet and consider which course appeals to you most.

The following four links will help you to identify the best A-Level combinations for you:

https://www.ucas.com/sites/default/files/tips_on_choosing_a_levels_march_2015_0.pdf

<https://www.informedchoices.ac.uk>

<https://university.which.co.uk/advice/a-level-choices/six-things-you-need-to-know-before-making-your-a-level-choices>

<https://www.ucas.com/alternatives/alternatives-higher-education>

Ask lots of questions

To help you narrow down the many options before you and feel confident about the decisions you make, talk to as many people as you need to: your parents, current teachers, A-Level teachers, friends who may have already been through the decision-making process, and other students.

Don't panic!

When presented with any situation, it helps to breathe, take your time, focus and then decide what to do. This is no different. Take the time you need to find out all you need to know.

Registrar's Welcome

Dear Families,

If you are thinking about joining Blanchelande from another school, as Registrar it is my pleasure to make the application process as straightforward as possible.

There is no better way of familiarising yourself with Blanchelande College than by experiencing it first-hand on a taster day; I can guarantee you that Blanchelande students give an incredibly warm welcome to newcomers. Alternatively, if you'd just like to come for a quiet meeting with the Principal and Mrs Moores, Head of Sixth Form, I would be delighted to arrange this.

I look forward to hearing from you soon.



Sonia Hollowell

Registrar

hollowells@blanchelande.sch.gg / 01481 237200



OUR A-LEVEL COURSES

ART AND DESIGN (CRAFT AND DESIGN)

Course title	A-Level Art and Design
Exam board	WJEC
Entry Requirements	Grade 6 in GCSE Art
Complementary subjects	Design Technology, English, History, Music, Photography

Is Art the right choice for me?

Do you enjoy the combination of practical, technical, creative, and contextual activities? Do you enjoy seeing your skills, ideas and understanding develop over time and through repeated effort? Successful students are hungry to improve and diversify their expressive skills, supported by their teacher's advice and guidance. Inspiration, perseverance, good time management, and independent working skills are key to success in Art.

What will I gain from A-Level Art?

- A-Level Art lays an appropriate foundation for further study of Art and Design, e.g. the Foundation Course in Art and Design, which is followed by a three-year BA (Hons) degree course.
- An Art & Design background is helpful for a variety of university degree courses, including architecture, engineering and dentistry. With its emphasis on imagination and perspective, Art can lead to careers in advertising, marketing, publishing and the media.
- Most of all, Art should be done for its own sake; it will set you on a lifelong journey and deepen your appreciation of the rich human artistic heritage.

Enrichment

Extra-curricular opportunities

- Visits to Art Galleries - both local and in UK/abroad
- School Arts Competitions e.g. The Sovereign Art Foundation, Art for Guernsey, Guernsey Arts Commission, Independent Schools Association competitions.

A-Level course outline:

Unit	Area of study	Content	Assessment	Proportion of total qualification
1 (Year 12)	Personal creative enquiry	An extended, exploratory project/portfolio	Internally assessed and Externally moderated.	40%
2 (Year 13)	Personal investigation	<ul style="list-style-type: none">• A major in-depth critical, practical and theoretical	Internally assessed and	36%

		investigative project/portfolio <ul style="list-style-type: none"> • An extended written element of 1000 words minimum 	Externally moderated.	
3	Externally set assignment	1. Preparatory study period 2. 15 hour period of sustained focus work- Exam conditions.	Exam Assessment. Internally assessed and externally moderated.	24%

Contact

Mrs Lee

leec@blanchelande.sch.gg

BIOLOGY

Course title	A-Level (7402) Biology
Exam board	AQA
Entry Requirements	Grade 6 in Biology (or 6.6 in Combined Trilogy)
Complementary subjects	Chemistry, Physics, Environmental Science, Mathematics, Mathematical Studies

Is A-Level Biology the right choice for me?

Biology A-level will give you the skills to make connections and associations with all living things around you. Biology literally means the study of life - and if that's not important, what is? Being such a broad topic, you're bound to find a specific area of interest, plus it opens the door to a fantastic range of interesting careers.

What will I gain from Biology A-Level?

Many people use an AS or A-level in Biology in their future studies or work. Even if you don't decide to work in biology, studying it still develops useful and transferable skills for other careers. You'll develop research, problem solving and analytical skills, alongside teamwork and communication. Universities and business regard all of these very highly. There are also many careers that Biology can prepare you for, including:

- doctor
- clinical molecular geneticist
- nature conservation officer
- pharmacologist
- research scientist
- vet
- secondary school teacher/ university lecturer
- marine biologist
- dentist

Enrichment

Get involved in the school's STEM club, read the New Scientist in the library, and/or take the initiative to edit and publish your own biological magazine, read on-line articles about the origins of Darwin's work, form a group with other Sixth Form Biologists to discuss issues or lead a subject club for younger students.

A-Level course outline

Paper	Area of study	Content	Assessment	Proportion of total qualification
1	Topics 1-4	<ul style="list-style-type: none">• Topic 1: Biological molecules• Topic 2: Cells	Written exam (2 hours)	35%

		<ul style="list-style-type: none"> • Topic 3: Organisms exchange substances with their environment • Topic 4: Genetic information, variation and relationships between organisms 		
2	Topics 5-8	<ul style="list-style-type: none"> • Topic 5: Energy transfers in and between organisms (A-level only) • Topic 6: Organisms respond to changes in their internal and external environments (A-level only) • Topic 7: Genetics, populations, evolution and ecosystems (A-level only) • Topic 8: The control of gene expression (A-level only) 	Written exam (2 hours)	35%
3	Topics 1-8	<ul style="list-style-type: none"> • Topic 1: Biological molecules • Topic 2: Cells • Topic 3: Organisms exchange substances with their environment • Topic 4: Genetic information, variation and relationships between organisms • Topic 5: Energy transfers in and between organisms (A-level only) • Topic 6: Organisms respond to changes in their internal and external environments (A-level only) • Topic 7: Genetics, populations, evolution and ecosystems (A-level only) • Topic 8: The control of gene expression (A-level only) 	Written exam (2 hours)	30%

Contact

Mrs Mason-Smith

masonsmithc@blanchelande.sch.gg

Mrs Cluett

cluettk@blanchelande.sch.gg

BUSINESS STUDIES

Course title	A-Level Business
Exam board	AQA (7132)
Entry Requirements	Grade 6 GCSE Maths & English
Complementary subjects	Business complements all subjects by providing a business angle to the career pathways of each subject area.

Is A-Level Business the right choice for me?

Business is a real-world A-Level for students considering Business-related courses at university. With a focus on helping you to become a good decision maker, you will learn essential managerial skills, alongside techniques to help you become an analytical problem solver. These skills are all highly sought after and valued in a wide range of careers.

Having an interest in current affairs and world news is essential to be able to contribute to the subject in class. You will need a good standard of Maths and English to cope with the writing element of the course, along with analysing data and graphs.

What will I gain from A-Level Business?

A Business qualification enables you to embark on a career in a range of fields. The skills you learn are transferable across a broad range of subjects and careers. Whatever you choose to do in the future, you will find that the things you learn on this course will help. For example, you will probably work with lots of different people, so knowledge of motivational theory will help you to work well with others and help them achieve their potential. You might have ambitious plans to start your own business. If that's the case, you'll find the marketing and finance topics particularly useful.

Enrichment

Participate in trips and visits to a range of businesses to see how they operate. Arrange relevant work experience. Join the debate club to improve your communication skills. Read the business news daily to ensure you are up to date. Write and produce your own articles for the school magazine/newsletter. Get involved with any club/event in school and offer to do their marketing and promotion. Join the drama club to improve your public speaking, confidence, and ability to hold the attention of an audience. Subscribe to a business magazine. Follow influential business leaders on social media.

A-Level course outline

All exam papers test the whole A-level course which covers:

Topic 1 – What is business?

Topic 2 – Managers, leadership and decision making

Topic 3 – Decision making to improve marketing performance

- Topic 4 – Decision making to improve operational performance
- Topic 5 – Decision making to improve financial performance
- Topic 6 – Decision making to improve human resource performance
- Topic 7 – Analysing the strategic position of a business
- Topic 8 – Choosing the strategic direction
- Topic 9 – Strategic methods: how to pursue strategies
- Topic 10 – Managing strategic change

Paper	Area of study	Content	Assessment	Proportion of total qualification
1	Business	Section A: 15 multiple choice questions Section B: short answer questions Section C & D: choice of 2 essay questions, of which you choose one.	Written exam: 2 hours 100 marks	33.33%
2	Business	3 mini case studies and you are asked roughly 3-4 questions on each case study, ranging from short-answer questions to extended-answer questions. Some of the questions will involve calculations and interpretations based on the data you have been given.	Written exam: 2 hours 100 marks	33.33%
3	Business	One extended case study with written information and data for calculations, requiring longer answers.	Written exam: 2 hours 100 marks	33.33%

Contact

Mrs Sloman slomans@blanchelande.sch.gg

CHEMISTRY

Course title	A-Level Chemistry (9CH0)
Exam board	Pearson Edexcel
Entry Requirements	Grade 6 in Chemistry and Mathematics (or 6.6 in Combined Trilogy)
Complementary subjects	Biology, Physics and Mathematics

Is A-Level Chemistry the right choice for me?

Chemistry students get to investigate a huge range of ideas: the big question you'll ask yourself is 'what is the world made of?' If you choose it as career, you have the potential to help solve all sorts of problems. You could work on a cure for cancer, or you might develop a new food: the possibilities are endless.

What will I gain from A-Level Chemistry?

Even if you don't decide to work in chemistry, studying it still develops useful and transferable skills for other careers. You'll develop research, problem solving and analytical skills, alongside teamwork and communication. Universities and businesses regard all of these very highly. There are also many careers that Chemistry can prepare you for, including:

- analytical chemist
- chemical engineer
- clinical biochemist
- pharmacologist
- doctor
- research scientist (physical sciences)
- toxicologist
- environmental consultant
- higher education lecturer or secondary school teacher
- patent attorney
- science writer.

Enrichment

Get involved in STEM and the Crest Awards, subscribe to a Chemistry magazine or produce one of your own, participate in the Chemistry Olympiad or Cambridge Chemistry Challenge, lead a Chemistry club for younger students, attend lectures by the Royal Society of Chemistry.

A-Level course outline

Paper	Area of study	Content	Assessment	Proportion of total qualification
1	Advanced Inorganic and Physical Chemistry	Topic 1: Atomic Structure and the Periodic Table Topic 2: Bonding and structure Topic 3: Redox 1 Topic 4: Inorganic Chemistry and the Periodic Table Topic 5: Formulae, Equations and Amounts of Substance Topic 8: Energetics I Topic 10: Equilibrium I Topic 11: Equilibrium II Topic 12: Acid-base Equilibria Topic 13: Energetics II Topic 14: Redox II Topic 15: Transition Metals	Written exam (1 hour 45 minutes)	30%
2	Advanced organic and Physical Chemistry	Topic 2: Bonding and structure Topic 3: Redox I Topic 5: Formulae, Equations and Amounts of Substance Topic 6: Organic Chemistry I Topic 7: Modern Analytical Techniques I Topic 9: Kinetics I Topic 16: Kinetics II Topic 17: Organic Chemistry II Topic 18: Organic Chemistry III Topic 19: Modern analytical techniques II	Written exam (1 hour 45 minutes)	30%
3	General and Practical Principles in Chemistry Any content Any practical skills	All topics listed for papers 1 and 2	Written exam (2 hours 30 minutes)	40%

Contact

Mr Brolly

brollyo@blanchelande.sch.gg

DESIGN AND TECHNOLOGY

Course title	A-Level Art and Design (Graphic Communication/ Three Dimensional)
Exam board	WJEC
Entry Requirements	Students meeting the College entrance criteria are eligible
Complementary subjects	Art / Mathematics / Mathematical Studies / Physics / ICT

Is Design and Technology the right choice for me?

It is extremely advantageous but not compulsory for pupils to have studied a technology subject at GCSE. We would expect a student to show a high level of aptitude in subjects with a similar skills base such as Art or be able to show a good portfolio of design work. Good drawing skills, an enjoyment of problem-solving and of working with a range of materials, experience with design software and excellent time management are all crucial skills. The practical and design elements of the course are underpinned with theory knowledge. It is an excellent third subject when studying Mathematics or Sciences. It can be combined with Art by students looking to pursue Art, Design or Architecture.

What will I gain from Design and Technology A-Level?

This course is suitable for students may want to pursue further studies in Architecture, Product Design, Industrial Design, Graphic Design and Engineering.

Enrichment

Enter Design and Technology (DT) competitions, subscribe to a subject related magazine, lead a DT club for younger students, attend trips and visits arranged by school but also take the initiative to explore DT independently.

A-Level course outline:

Unit	Area of study	Content	Assessment	Proportion of total qualification
1	Personal creative enquiry	An extended, exploratory project/portfolio	Non-exam assessment	40%
2	Personal investigation	a major in-depth critical, practical and theoretical investigative project/portfolio	Non-exam assessment	36%
3	Externally set assignment	Part 1: preparatory study period Part 2: 15-hour period of sustained focus work	Non-exam assessment	24%

Contact

Mrs Van der Linden vanderlindenr@blanchelande.sch.gg

DRAMA AND THEATRE

Course title	A Level (7262)
Exam board	AQA
Entry Requirements	Grade 6 in GCSE Drama and English
Complementary subjects	English, Music, Art, Design Technology

Is Drama and Theatre A-Level the right choice for me?

A-Level Drama and Theatre requires skills in two different areas: theoretical/academic and practical/creative. Not only do you need to enjoy reading, and be able to write analytical/evaluative essays, but you also need a commitment to performing and a capacity to work collaboratively with your classmates on the practical elements of the course. An interest in live theatre is a vital requirement: you need to feel happy about the prospect of spending evenings during the course of year 12 and 13 on regular theatre trips.

What will I gain from studying A-Level Drama and Theatre?

A-Level Drama is incredibly useful if you are aiming at drama school, and it is good preparation for Drama at university (i.e. Cambridge, Oxford, Manchester), and for Creative Writing courses. Learners considering joint courses in English and Drama should certainly consider studying both these subjects at A-Level.

Law and Science students might well view this A-Level a very attractive option in addition to their facilitating subjects. It not only offers variety to an A-Level programme, but provides breadth when it comes to university applications, and develops skills applicable to a wide range of higher education subjects and in the workplace.

The confidence, soft skills, and communication skills developed from drama are highly desirable in a wide range of occupational areas including law, marketing, sales and advertising, leisure, sport and tourism, catering and hospitality, retail sales and customer services, broadcast media and the performing arts.

There is a range of apprenticeships that link to an interest in performing arts, including:

- recording engineer
- community arts administrator
- music publishing assistant
- theatre technician
- exercise instructor
- playworker
- radio broadcast assistant

Enrichment

Lead a Drama Club for younger students, direct a short play of your own, participate in the organisation as well as the performing of school drama productions, attend theatre trips and visits.

Component	Area of study	Content	Assessment	Proportion of total qualification
1	Drama and theatre	<ul style="list-style-type: none">• Knowledge and understanding of drama and theatre• Study of two set plays, one chosen from List A, one chosen from List B• Analysis and evaluation of the work of live theatre makers	Written exam (3 hours) (80 marks)	40%
2	Creating original drama	<ul style="list-style-type: none">• Process of creating devised drama• Performance of devised drama (students may contribute as performer, designer or director)	Internally assessed practical (20 marks) NEA (40 marks)	30%
3	Making theatre (practical)	<ul style="list-style-type: none">• Practical exploration and interpretation of three extracts (Extract 1, 2 and 3) each taken from a different play• Reflective report analysing and evaluating theatrical interpretation of all three extracts	Externally assessed practical (40 marks) NEA (20 marks)	30%

Contact

Ms Vlad

vladj@blanchelande.sch.gg

ENGLISH LITERATURE

Course title	Level 3 Advanced GCE in English Literature
Exam board	Edexcel
Entry Requirements	Grade 6 at GCSE in English Literature
Complementary subjects	History, Religious Studies, Psychology

Is A-Level English Literature the right choice for me?

Reading, discussing and writing are key. You will be expected not just to read, but to develop the skill of thinking critically about what you read and of analysing texts to work out how the author's use of situation and language create powerful impressions. You will need to explore your own emotional response to writing and be able to discuss it, in class and through your own writing, and to argue constructively for your point of view.

There are often no 'correct' responses to issues or questions raised in English Literature, so you need to be open minded and willing to hear and discuss the opinions of others.

What will I gain from English Literature A-Level?

English Literature is a highly respected A-Level. As well as an English Literature degree itself, students of Literature might go on to study for University degrees in a range of subjects including: History, Sociology, Psychology, Drama and Theatre Studies and Law. Even Medical Schools value the subject highly.

It is also very effective in developing transferrable skills such as interpretive abilities, communication, an understanding of how language works, close analysis, and the ability to construct a well-argued case. These are highly valued in a range of graduate careers such as Teaching, Business and Finance, Journalism, Law, Publishing – even Politics.

Enrichment

English students will have the opportunity to regularly attend livestreamed broadcasts of West End productions, to participate in the Sixth Form Book Club, to attend events during the Guernsey Literary Festival, and to attend workshops to support their own writing in various fiction and non-fiction genres.

Course outline

Component	Area of study	Content	Assessment	Proportion of total qualification
1	Drama	One Shakespeare play and one other drama either tragedy or comedy <ul style="list-style-type: none">• <i>Othello</i>	Written exam (2 hours 15 minutes)	30%

		<ul style="list-style-type: none"> • <i>A Streetcar Named Desire</i> 		
2	Prose	<p>Two prose texts from a chosen theme; one pre-1900 text</p> <ul style="list-style-type: none"> • <i>Frankenstein</i> • <i>The Handmaid's Tale</i> 	Written exam (1 hour 15 minutes)	20%
3	Poetry	<p>Poetic form, meaning and language, a selection of contemporary poetry and either poetry of a literary period or a single poet</p> <ul style="list-style-type: none"> • <i>Post 2000 poetry</i> • <i>Geoffrey Chaucer</i> 	Written exam (2 hours 15 minutes)	30%
4	Non-examination assessment (coursework)	<p>Two texts selected by school:</p> <ul style="list-style-type: none"> • <i>Jane Eyre</i> • <i>Wide Sargasso Sea</i> 	One extended comparative essay referring to two texts (2,500-3,000 words)	20%

Contact

Miss Flood

floodj@blanchelande.sch.gg

EXTENDED PROJECT QUALIFICATION

Course title: Extended Project Qualification (EPQ); equivalent to 0.5 of an A-Level

Exam Board: AQA

Entry Requirements: All students studying 3 A-Levels are eligible

Complementary subjects: All

Is the EPQ the right qualification for me?

The Extended Project Qualification (EPQ) is a qualification undertaken in addition to three A-Levels. The EPQ requires around 120 hours of study; much of the EPQ is undertaken independently, with an assigned member of staff to act as a mentor.

What form does the project take?

The EPQ can be either a dissertation (5,000 words being a common guideline) or another form: e.g. a product or musical/dramatic composition.

Are there any conditions to undertaking the EPQ?

The Head of Sixth Form will approve each student's EPQ proposal, based on the suitability of the student, their chosen topic, and the resources of the school to support such a study.

What will I gain from the EPQ?

The EPQ is an opportunity for highly motivated and high attaining students to undertake an independent, in-depth study. For the right student the EPQ is a great platform to showcase commitment, enthusiasm, mature learning skills and extensive knowledge. For students looking to apply for competitive university courses it can give an edge and the confidence of knowing a topic in detail related to your A-Level courses.

Contact

Mrs Toerien toerienj@blanchelande.sch.gg

GEOGRAPHY

Course title	A-Level Geography
Exam board	Edexcel
Entry Requirements	Grade 6 GCSE Geography
Complementary subjects	Biology, Environmental Science, Mathematics

Is A-Level Geography the right choice for me?

This course will help increase your understanding of the world, and the people and places within it. You will develop and apply understanding of geographical concepts, interactions and processes which help to understand and interpret our changing world. As a global citizen, you will also recognise the challenges of sustainability for the future and the implications for your own and others' lives, so Geography will help to also improve you as a critical and reflective learner, aware of the importance of attitudes and values. To study A-Level Geography, you need to have an enquiring and open mind. Geography is a study of the world around us and you need to be aware of issues worldwide. Having an interest in current affairs and reading newspapers is most important as this informs a lot of in-class discussion. You need to be able to debate issues such as migration and to think about them from political and social perspectives as well. Your opinion is important, but you also need to think about debates from someone else's perspective. You will need a good standard of Maths and English to cope with extended writing and the skills required working with maps, graphs and data.

What will I gain from A-Level Geography?

As a Geography student at sixth form you will have the opportunity to develop a wide range of transferable skills for your future. You will develop strong teamwork, communication and problem solving skills including those used in fieldwork such as map work and leading an independent enquiry. You will also gain a concise, accurate and high level of written communication of geographical theory and understanding including the use of contemporary case studies to demonstrate knowledge of current affairs, geopolitics and critical thinking. Throughout the course you will be stretched to develop your presentation, debating skills and high-level ICT skills, including using GIS software. If you opt to pursue the subject further, a Geography degree enables you to embark on a career in a range of fields, including those in the education, commerce, industry, transport, tourism and public sectors. You will have many transferable skills, attracting employers from the business, law and finance sectors. Examples of employers include: the Armed Forces, Guernsey Water (or any Water company) and The Environment Agency.

Enrichment

Fieldwork: Compulsory fieldwork of at least 4 days will be undertaken during the A level course. This fieldwork is to ensure you can complete the independent investigation worth 20% of the final A level grade awarded.

Geography Ambassador: Being a Geography Ambassador will allow you to demonstrate leadership skills within the Geography Department focusing on raising the profile of environmental issues at local, national and international levels. Examples of this include: supporting with arranging competitions, leading a Geo club/society, writing newsletter/magazine articles, supporting younger pupils in their geography lessons or fieldwork. You will be involved in promoting what we do in the department and how we are trying to tackle environmental issues in our school and local area. Being a Geography Leader will enhance your 6th form experience to show that you have a range of skills to lead and manage people and have a focus on environmental issues.

A-Level course outline

Paper	Area of study	Content	Assessment	Proportion of total qualification
1	Physical Geography	<ol style="list-style-type: none"> 1. Tectonic Processes and hazards 2. Landscape systems, processes and change (Coasts) 3. Water cycle and water insecurity 4. Carbon cycle and energy security 	<p>Written exam: 2 hours 15 minutes</p> <p>105 marks</p>	30%
2	Human Geography	<ol style="list-style-type: none"> 1. Globalisation 2. Diverse Places 3. Superpowers 4. Health, Human Rights and Intervention 	<p>Written exam: 2 hours 15 minutes</p> <p>105 marks</p>	30%
3	Geographical Issues	<p>3 synoptic themes:</p> <ul style="list-style-type: none"> • Players • Attitudes and actions • Futures and uncertainties <p>The synoptic investigation will be based on a geographical issue within a place-based context that links to these themes and is rooted in the compulsory content areas</p>	<p>Written exam 2 hours 15 minutes</p> <p>70 marks</p>	20%
	Non-examined Assessment: Independent	Students complete an individual investigation which must include data collected in the field. The individual investigation must be based on a	<p>3,000–4,000 words</p> <p>70 marks</p>	20%

	Fieldwork Enquiry	question or issue defined and developed by the student relating to any part of the specification content.	Marked by teachers Moderated by Edexcel	
--	----------------------	---	--	--

Contact

Mrs Fairley fairleyh@blanchelande.sch.gg

HISTORY

Course title	Level 3 Advanced GCE in History (9HI0)
Exam board	Edexcel
Entry Requirements	Grade 6 in History, English or Religious Studies
Complementary subjects	Politics, English Literature, Religious Studies, Psychology

Is History A-Level the right choice for me?

History GCSE, although useful, is not essential for the study of History A-Level. It is more important that you have or can develop an analytical and precise writing-style. You will also need to assimilate a great deal of information and to assess what is valid for a particular question. Your teachers will guide you through the topics and techniques required. You will need to supplement this work through your own reading and note-taking. Reading around the topics and researching are key elements of A-Level History.

What will I gain from A-Level History?

History is one of the so-called 'facilitating subjects' when considering university application. These are subjects commonly asked for in universities' entry requirements, regardless of the course you're applying to – this makes History a good choice to keep your degree options open.

Distinguished History graduates are to be found in a whole range of occupations; from politics and the media to business and finance. Many of Britain's leading politicians, civil and diplomatic servants, lawyers, barristers, educators, businessmen and women, financiers and managers are History graduates.

History teaches valuable transferable skills which can be applied across a broad range of careers, such as the ability to interpret and organise information, as well as research skills and strategies. History students learn how to be objective when interpreting issues and events, and they develop excellent verbal and written communication skills. The format of A-Level lessons and the demands of the course develop students' confidence to argue, debate and speculate. Surveys of employers consistently show that History students are seen as having highly desirable skills and employability ratings.

Enrichment

Students will have the opportunity to work with professional historians, including authors, archaeologists and academics. History students will be the core members of the History Society, which is focused on the history of Les Vauxbelets (the school estate) and other aspects of Bailiwick history.

Course Outline

Paper	Area of study	Content	Assessment	Proportion of total qualification
1	Britain transformed, 1918-97	<ul style="list-style-type: none"> • Theme 1: A changing political and economic environment, 1918–79 • Theme 2: Creating a welfare state, 1918–79 • Theme 3: Society in transition, 1918–79 • Theme 4: The changing quality of life, 1918–79 • Historical interpretations: What impact did Thatcher’s governments (1979–90) have on Britain, 1979–97? 	Written exam (2 hours 15 minutes)	30%
2	The USA, 1955–92: conformity and challenge	<ul style="list-style-type: none"> • Topic 1: Affluence and conformity, 1955-63 • Topic 2: Protest and reaction, 1963-72 • Topic 3: Social and political change, 1973-80 • Topic 4: Republican dominance and its opponents, 1981-92 	Written exam (1 hour 30 minutes)	20%
3	Rebellion and disorder under the Tudors, 1485–1603	<p><i>In Breadth: Controlling a fractious nation – changes in Tudor government, 1485-1603</i></p> <ul style="list-style-type: none"> • Theme 1: Changes in governance at the centre • Theme 2: Gaining the cooperation of the localities <p><i>In Depth: Challenges to authority</i></p> <ul style="list-style-type: none"> • Topic 1: Challenging the succession, 1485–1499 • Topic 2: Challenging religious changes, 1533–37 • Topic 3: Agrarian discontent: Kett’s rebellion 1549 	Written exam (2 hours 15 minutes)	30%

		<ul style="list-style-type: none"> • Topic 4: Queen takes Queen? The revolt of the northern earls, 1569–70 • Topic 5: Troublesome Ireland: Tyrone’s rebellion, 1594–1603 		
Course work	A range of different historical topics and interpretations maybe chosen	An historical enquiry that will enable pupils to investigate and research a question that they have set in conjunction with their teacher. Pupils will be encouraged to explore Guernsey's rich past and use the local resources both in school and beyond. They may however, choose to research some of the great historical interpretations in History from the last millennia.	An assignment, selected by school, of between 3,000-4,000 words	20%

Contact

Mr Miller

millerj@blanchelande.sch.gg

MATHEMATICS

Course title	Level 3 Advanced GCE in Mathematics (9MA0)
Exam board	Edexcel
Entry Requirements	Grade 7 or above in GCSE Mathematics
Complementary subjects	Physics, Chemistry, Languages, Music

Is A-Level Mathematics the right choice for me?

You will need a strong understanding of Algebra and algebraic techniques as well as a desire to learn more mathematical techniques and discover how to use mathematical models to represent real life situations. Experience of studying further Mathematics at GCSE level is desirable but not essential. Finally, you will need to be willing to take increasing responsibility for your own mathematical development.

What will I gain from Mathematics A-Level?

Mathematics is fundamental to almost every aspect of human life, and the problem solving, analytical and research skills acquired through A-Level study, as well as the ability to think logically are sure to equip you for a wide range of university courses and careers. Here are just a few careers that Mathematics will help you to reach:

- Accountancy
- Physicist
- Meteorologist
- Web designer
- Programmer
- Insurance broker
- Teacher
- Actuary
- Stock trader
- Financial risk analyst

Enrichment

Mathematics students will have opportunities to enrich and share their studies, including:

- CREST Awards: real-world STEP projects
- Senior Team Maths Challenge (STMC): enrichment and challenge to teams of senior students in the UK
- Becoming a Maths Mentor for younger students, supporting the school's Numeracy Support programme

Paper	Area of study	Content	Assessment	Proportion of total qualification
1	Pure Mathematics	Topic 1 – Proof Topic 2 – Algebra and functions Topic 3 – Coordinate geometry in the (x, y) plane Topic 4 – Sequences and series Topic 5 – Trigonometry Topic 6 – Exponentials and logarithms Topic 7 – Differentiation Topic 8 – Integration Topic 9 – Numerical methods	Written exam (2 hours)	33.33%
2		Topic 10 – Vectors	Written exam (2 hours)	33.33%
3	Statistics Mechanics	<p><i>Statistics</i></p> <ul style="list-style-type: none"> ● Topic 1 – Statistical sampling ● Topic 2 – Data presentation and interpretation ● Topic 3 – Probability ● Topic 4 – Statistical distributions ● Topic 5 – Statistical hypothesis testing <p><i>Mechanics</i></p> <ul style="list-style-type: none"> ● Topic 1 – Quantities and units in mechanics ● Topic 2 – Kinematics ● Topic 3 – Forces and Newton’s laws ● Topic 4 – Moments 	Written exam (2 hours)	33.33%

Contact

Mrs O’Leary

olearys@blanchelande.sch.gg

MATHEMATICAL STUDIES

Course title	Level 3 Mathematical Studies (1350)
Exam board	AQA
Entry Requirements	Grade 5 in Mathematics GCSE
Complementary subjects	Biology, Chemistry, Physics, Geography, Physical Education and Psychology

What is Mathematical Studies?

Mathematical studies is a Level 3 qualification, completed in one year (Year 12), and is worth half an A-Level.

Is Mathematic Studies the right choice for me?

You should enjoy learning mathematical skills and processes and have a desire to investigate how they can be applied to real life situations. You may also understand that Mathematics is an important complementary discipline to aid the other A-Levels you are studying.

What can I gain from Mathematical Studies A-Level?

Mathematical Studies aims to prepare students for the mathematical demands of higher education and employment where there is a distinct mathematical or statistical element, but where the mathematical demands do not stretch to a requirement for A-level mathematics.

Paper	Area of study	Content	Assessment	Proportion of total qualification
1	Compulsory Components	<ul style="list-style-type: none">• Analysis of data• Mathematics for personal finance• Estimation	Written exam (1 hour 30 minutes)	50%
2	Optional content (selected by school)	<ul style="list-style-type: none">• Critical path and risk analysis• Expectation• Cost benefit analysis	Written exam (1 hour 30 minutes)	50%

Contact

Mrs O'Leary olearys@blanchelande.sch.gg

MODERN FOREIGN LANGUAGES

Is an A-Level in a Modern Language the right choice for me?

Languages reveal fascinating things about the people that use them, as cultures are both shaped by the language they speak while actively shaping that language in turn. Are you interested in humanity, history and the challenges of the modern world? If so, you will find A-Level Modern Languages rewarding and worthwhile.

Studying French or Spanish (or both) will involve reading and listening to a wide variety of media texts – news and magazine articles and broadcasts, as well as interviews. You will develop your speaking and writing skills through class-based discussion and by writing in the target language with increasing confidence, including essays and shorter pieces, such as summaries. You will also practise translation from English into French, and vice versa. You will learn to research in your target language, and present back to your teacher and classmates. The A-Level course equips you to be able to function in your chosen language independently, while also laying the foundation for further study.

What will I gain from studying a Modern Language at A-Level?

- Knowledge of a second foreign language, enhancing your employability in a globally connected world.
- Excellent analytical and presenting skills in a second or third language.
- Ability to write clearly and concisely in a second or third language.
- An authentic appreciation of another European culture, particularly through literature, film, history and national customs.
- The tools to confidently immerse yourself in Spanish or French contexts outside school.
- An A-Level that universities will particularly value – an A-Level in Spanish or French will be able to enable you to access aspects of other subjects, including History, English, Politics, or Law; it also makes a joint honours degree possible (e.g. studying Law and French).
- Higher employability in careers including: interpreter, translator, teacher, international development worker, diplomacy, broadcast journalist, business, logistics, finance, marketing, advertising and public relations (PR).

FRENCH

Course title	A-Level French (7652)
Exam board	AQA
Entry Requirements	Grade 7 in GCSE French
Complementary subjects	French complements all other subjects

Enrichment

Language immersion courses/trips, engaging with literature/films/songs in French, running a French club for younger students, arranging work experience in France or a French speaking country, involvement in the Le French Festival (celebrating the strong relationship between the bailiwick of Jersey and Guernsey and France), explore ways of celebrating Guernsey's French heritage and maybe launch an initiative to preserve Guernsey's own Norman language!

Paper	Area of study	Content	Assessment	Proportion of total qualification
1	Listening, reading and writing	<ul style="list-style-type: none"> Aspects of French-speaking society: current trends Aspects of French-speaking society: current issues Artistic culture in the French-speaking world Aspects of political life in the French-speaking world Grammar 	Written exam (2 hours 30 minutes)	50%
2	Writing	<ul style="list-style-type: none"> One text and one film or two texts from the list set in the specification (<i>Un sac de billes</i> and <i>Entre les murs</i>) Grammar 	Written exam (2 hours)	20%
3	Speaking	<ul style="list-style-type: none"> Individual research project One of four themes ie Aspects of French-speaking society: current trends, Aspects of French-speaking society: current issues, Artistic culture in the French-speaking world, Aspects of political life in the French-speaking world 	Oral exam (21-23 minutes – including 5 minutes preparation time)	30%

Contact

Mrs Boldison-Smith smitha@blanchelande.sch.gg

SPANISH

Course title	A-Level Spanish (7692)
Exam board	AQA
Entry Requirements	Grade 7 in GCSE Spanish
Complementary subjects	French, English Literature, Religious Studies, History

Enrichment

Language immersion courses/trips, engaging with literature/films/songs in Spanish, running a Spanish club for younger students, arranging work experience in an Hispanic country, celebrate Hispanic festivals around the world and set up stalls to share this with the school/local community, maybe launch an initiative to promote Guernsey's own language and relate this to preserving the regional dialects in Spain and Latin America.

Paper	Area of study	Content	Assessment	Proportion of total qualification
1	Listening, reading and writing	<ul style="list-style-type: none"> Aspects of Hispanic society • Artistic culture in the Hispanic world Multiculturalism in Hispanic society Aspects of political life in Hispanic society Grammar 	Written exam (2 hours 30 minutes)	50%
2	Writing	<ul style="list-style-type: none"> One text and one film or two texts from the list set in the specification (<i>Como agua para chocolate</i> and <i>El laberinto del fauno</i>) Grammar 	Written exam (2 hours)	20%
3	Speaking	<ul style="list-style-type: none"> Individual research project One of four themes ie Aspects of Hispanic society or Artistic culture in the Hispanic world or Multiculturalism in Hispanic society or Aspects of political life in Hispanic society 	Oral exam (21-23 minutes – including 5 minutes preparation time)	30%

Contact

Mrs Boldison-Smith smitha@blanchelande.sch.gg

MUSIC

Course title	A-Level Music (H543)
Exam board	OCR
Entry Requirements	GCSE Music grade 6 (desirable but not a pre-requisite)
Complementary subjects	English, History, Mathematics, Physics

Is A-Level Music the right choice for me?

A genuine interest and passion not just for listening to music but also to understand the technicalities, theory and creation of music is essential. You will need to have musical experience separate to your academic studies (If you have taken a musical instrument up to grade 5) and thus have a good grounding in musical theory and be a strong performer in either instrumental or vocal music or in Composition

What will I gain from studying A-Level Music?

A-Level Music is a highly regarded subject, either alongside other creative courses or in demonstrating a broader range of skills next to Science, Mathematics or other non-creative subjects.

Whilst Music can be a useful subject for Arts and Media courses at university, the most obvious degree pathway is going on to a degree in Music, which can lead to a range of exciting career options, including becoming a professional musician, a sound technician, a music therapist, a teacher, or a private tutor. The OCR A-Level in Music specification provides a full foundation for study at Higher Education level, including conservatoires and universities.

Jobs that are less directly related a Music degree, but where a Music degree could be very valuable include arts administration, and work in radio and television and theatre and events management.

Enrichment

Get involved in Music clubs and activities and run one of your own, put together a concert with other pupils, attend concerts, compose and listen to as much music as you can.

A-Level course outline:

Components	Area of study 1-6	Content	Assessment	Proportion of total qualification
Performing A (01)	Student has free choice - applies knowledge of skills, techniques	Recital – minimum of 6 minutes and three contrasting pieces. Choice of:	Externally assessed Non-exam	25%

	and interpretation to free performance choices.	<ul style="list-style-type: none"> • solo piece(s) on one or more instrument or voice • ensemble performance (including accompanying) • realisation using music technology Section 1: Free Choice Section 2: Focused Study 		
Performing B (02) Completed by most able performers	Student has free choice - applies knowledge of skills, techniques and interpretation to free performance choices.	<p>Recital - minimum 10 minutes and 3 contrasting pieces. Choice of:</p> <ul style="list-style-type: none"> • solo piece on one or more than one instrument or voice • ensemble performance • accompanying • realisation using music technology. <p>Section 1: Free Choice Section 2: Focused Study</p>	Externally assessed Non-exam	35%
Composing A (03) Completed by most able composers	Composition relates to Areas of Study chosen to be studied.	Learners are required to compose three separate pieces of music with a combined duration of at least 8 minutes.	Externally assessed Non-exam	35%
Composing B (04)	Composition relates to an Area of Study chosen to be studied.	Learners are required to compose two separate pieces of music with a combined duration of at least four minutes.	Externally assessed Non-exam	25%
Listening and Appraising (05)	Area of Study 1 and 2 compulsory. Learner studies and	AoS 1: Instrumental Music of Haydn, Mazart and Beethoven.	Written exam 2 hrs 30 mins	40%

	chooses questions related to two other Areas of Study 3,4,5 or 6.	<p>AoS 2: Popular Song: Blues, Jazz Swing and Big Band.</p> <p>AoS 3: Developments in instrumental Jazz, 1910 to the present day.</p> <p>AoS 4: Religious Music of the Baroque Period.</p> <p>AoS 5: Programme Music 1820-1910.</p> <p>AoS 6: Innovations in Music, 1900 to the present day.</p>		
--	---	--	--	--

Contact

Mr Houston

houstonn@blanchelande.sch.gg

PHOTOGRAPHY

Course title	Photography A-Level (H603)
Exam board	OCR
Entry Requirements	Grade 6 in either Art, IT or Design Technology
Complementary subjects	Art, Music, Design Technology

Is A-Level Photography the right choice for me?

Photography will suit students who are naturally imaginative, creative, experimental, technical and aesthetic. Photography students need to enjoy working independently, seeking innovative ways to fit their skills around different life experiences. Students choosing this subject should have a strong inclination towards a career that will see Photography as a strong asset.

What will I gain from studying A-Level Photography?

You will develop a deep understanding of Photography and the ability to critically evaluate your own work and the work of others. You will gain the skills and confidence to work with cameras and IT to create work that will have value in artistic and marketing contexts.

Enrichment

There are visits to galleries, museums, degree shows, workshops, location work in a city and a beach location, opportunities to meet and work with professional photographers and to enter photography competitions. There is also a field trip and the chance to set up a Photography Society in school.

What areas of Photography does the course include?

Students work in one or more of the following areas of Photography:

- portraiture
- landscape photography
- commercial photography
- still-life photography
- documentary photography
- experimental imagery
- editorial photography
- photographic installation
- the photographic process
- moving image
- animation

Students will choose from techniques such as:

- digital technology
- use of camera equipment and lenses

- lighting and exposure
- moving image and animation
- alternative art-based printing such as screen printing
- alternative chemical print processes such as liquid emulsion, toning and types of paper

A-Level course outline:

Component	Area of study	Content	Assessment	Proportion of total qualification
1	Personal investigation	Learners must produce two elements in response to a centre- or learner-set starting point, brief, scenario or stimulus: a portfolio of practical work and a related study.	Non exam assessment (including minimum 1000 words of extended written response)	60%
2	Externally set task	It will provide learners with a range of themes each with written and visual starting points, a brief and stimuli. From these, one option must be selected by the learner on which to base their personal response.	Non exam assessment (15-hour supervised task)	40%

Contact

Mr Rose

office@blanchelande.sch.gg

PHYSICS

Course title	A-Level (7408) Physics
Exam board	AQA
Entry Requirements	Grade 6 at GCSE or 6.6 in Combined Trilogy
Complementary subjects	Mathematics, Mathematical Studies, Biology, Chemistry

Is A-Level Physics the right choice for me?

You will already be familiar with many of the topics that you will study, including forces, waves, radioactivity, electricity and magnetism. At A-level, you'll look at these areas in more detail and find out how they are interconnected. You will also learn how to apply Mathematics to real-world problems and explore new areas such as particle physics, cosmology and medical physics.

What will I gain from Physics A-Level?

Perhaps more importantly, you will develop skills that can be transferred to just about any other area of work, from setting up a business to saving the planet. Even if you don't go on to become a physicist, learning to think like one will help you get to the root of any problem and draw connections that aren't obvious to others. Physics won't give you all the answers, but it will teach you how to ask the right questions.

There are also many careers that Physics can prepare you for, including:

- Space investigation
- Medical Physics
- Architecture
- Engineering
- Film, TV and computer science/IT
- Law

Enrichment

- Physics Olympiad (Year 13)
- Trips to CERN and the Isaac Newton group of Telescopes (ING)
- CREST Awards
- Lead a Physics Club for younger students
- Read Physics magazines in the library
- Write and produce your own articles for the school magazine/ newsletter

A-Level course outline:

Paper	Area of study	Content	Assessment	Proportion of total qualification
1	Sections 1–5 and 6.1 (Periodic motion)	1. Measurements and their errors 2. Particles and radiation 3. Waves 4. Mechanics and materials 5. Electricity 6.1 Periodic motion	Written exam (2 hours)	34%
2	Sections 6.2 (Thermal Physics), 7 and 8 Assumed knowledge from sections 1 to 6.1	6.2 Thermal Physics 7. Fields and their consequences 8. Nuclear physics In addition: assumed knowledge from sections 1 to 6.1 (see Paper 1 above)	Written exam (2 hours)	34%
3	Section A: Compulsory section: Practical skills and data analysis Section B: Students enter for one of sections 9, 10, 11, 12 or 13	Section B: One of the following: 9. Astrophysics 10. Medical physics 11. Engineering physics 12. Turning points in physics 13. Electronics	Written exam (2 hours)	32%

Contact

Mr Broad

broadd@blanchelande.sch.gg

PSYCHOLOGY

Course title	A-Level Psychology (7182)
Exam board	AQA
Entry Requirements	Grade 6 in Mathematics and English
Complementary subjects	Mathematics/ Mathematical Studies, English, Biology

Is A-Level Psychology the right choice for me?

You should have a genuine curiosity about the way humans think and behave. Psychology is a science and you do need to be comfortable with numbers. The requirement to write essays, in which you present arguments for and against an issue, means that you should also have a good grasp of the English language. A-Level Psychology involves studying a wide range of topics, so there is a lot of information to absorb, and importantly, you will need to learn how to apply this knowledge. The topics Psychologists study are complex, therefore, it is common to find different explanations of psychological phenomena, such as the nature of intelligence. An important skill you will learn is how to evaluate conflicting theories about the topics you cover, and the studies that support, or challenge them.

What will I gain from studying A-Level Psychology?

The A-Level Psychology course is a great subject to study because it will help you to develop a range of transferable skills including critical analysis, independent thinking and research. These skills are beneficial in both the working world and when going onto further study.

Studying Psychology at university can give you a whole host of exciting career options including, marketing, human resources, teaching, nursing, forensic psychology and occupational therapy.

Enrichment

Attend Psychology conferences, get involved in debating theories and evidence at Debate Club, voice your opinions in writing on current affairs, get in touch with universities to see if you can be involved in a research project. Subscribe to a Psychology magazine such as 'National Psychologist'.

A-Level course outline:

Paper	Area of study	Content	Assessment	Proportion of total qualification
1	Compulsory content 1–4	1. Social influence 2. Memory 3. Attachment 4. Psychopathology	Written exam (2 hours)	33.3%
2	Compulsory content 5–7	5. Approaches in Psychology 6. Biopsychology 7. Research methods	Written exam (2 hours)	33.3%

3	Compulsory content 8 and Optional content	8. Issues and debates in Psychology 9. Relationships 10. Schizophrenia 11. Aggression	Written exam (2 hours)	33.3%
---	---	--	------------------------	-------

Contact

Mrs Moores

Pagem@blanchelande.sch.gg

PHYSICAL EDUCATION

Course title	Physical Education and Sport (7582)
Exam board	AQA
Entry Requirements	Grade 6 in Physical Education and Biology. (Both a high level of sporting competence and regular competitive participation in at least one sport/physical activity are requirements.)
Complementary subjects	Any Science, Geography, Mathematics, Psychology

Is A-Level Physical Education the right choice for me?

Throughout the course you will develop your knowledge and understanding relating to scientific, socio-cultural and practical aspects of PE. This will include understanding the physiological and psychological states that affect performance, the role of technology in contemporary sport and socio-cultural factors that influence involvement in sport. You should also have an active interest in health, well-being and the theoretical understanding of the human body.

What will I gain from studying A-Level Physical Education?

Physical Education (PE) isn't just about playing sport. Within lessons you will utilise booklets and undertake group work activities with regular assessments, as well as enhancing your practical performance. The PE course promotes independent learning and encourages you to take ownership over your own learning and progress. You will develop study and employment skills that will support you throughout your course and future employment of studies. Physical Education lends itself to a range of careers in sports and fitness as well as other industries. Supporting over 450,000 jobs in the UK, sport is a fast-growing sector in the economy. Employment opportunities could include being at the cutting edge of elite sport, technological developments, sports law and health related careers, for example, Dietician, Physiotherapy and Sports medicine. Other careers that you could consider doing with PE include: Sports Scientist, PE teacher, Professional Sportsperson, Sports Coach/Consultant, Sports Policy Adviser at local and national level. Useful sites include Careers in Sport, Prospects, BASES, All About Careers and The Apprenticeship Guide.

Enrichment

Participate in and lead sports clubs and practices in and out of school, attend talks, lectures, trips and workshops and arrange related work experience.

A-Level course outline:

Paper	Content	Assessment	Proportion of total qualification
1	Factors affecting participation in physical activity and sport:	Written 2 hr	35%

	Section A: Applied anatomy and physiology Section B: Skill acquisition Section C: Sport and society		
2	Factors affecting optimal performance in physical activity and sport: Section A: Exercise physiology and biomechanics Section B: Sport psychology Section C: Sport and society and technology in sport	Written 2 hr	35%
Physical Performance	Practical performance in physical activity and sport: 1. Performance assessment (practical performance) 2. Performance analysis assessment (analysis and evaluation in written format)	Internal assessment And External moderation	30%

Contact

Mrs McDougall mcdougallm@blanchelande.sch.uk

THEOLOGY & PHILOSOPHY

Course title	Religious Studies (H573)
Exam board	OCR
Entry Requirements	Grade 6 in Religious Education (or English/History)
Complementary subjects	Religious Education complements all subjects

Is Religious Education and Philosophy the right choice for me?

You may love precision; you may appreciate the opening up of the mind to see in a different way. You should have an enquiring mind and enjoy asking and discussing big questions; those that don't have a definitive answer. Religious Studies and Philosophy challenges students to criticise and analyse different ideas whilst developing well-reasoned arguments. Lessons will take the form of discussions and group work. The abilities and capacities which will serve you best are things like tenacity and clarity of thought, willingness to listen and to try to understand, concentration and focus. Independent study is important, and you will need to be organised!

What will I gain from A-Level Religious Education and Philosophy?

A-Level Religious Studies and Philosophy can provide you with excellent transferable skills, from essay writing, developing confidence in debating, to developing the ability to appreciate other viewpoints. These skills can be helpful in a range of University degrees involving critical thinking and discussion e.g. Humanities, English, Psychology, PPE.

Religious Studies and/or Philosophy or a related subject at degree level can lead to a range of challenging and rewarding jobs, using either direct knowledge gained from the subject or from the skills gained. Possible jobs from a Religious Studies and/or Philosophy degree include: Lecturing, teaching, advice worker, archivist, work within 'third sector' organisations, counselling, community development worker, and police officer or youth worker.

Enrichment

Theology and Philosophy students form the core of the school's Debating Society, and hold fortnightly lunchtime debates on 'big questions', such as the existence of God, the relationship between Science and Religion, and whether miracles occur. Students also enjoy the opportunity to attend lectures and talks held by universities and visiting speakers.

Course Outline

Paper	Area of study	Content	Assessment	Proportion of total qualification
1	Philosophy of religion	<i>Ancient Philosophical Language and Thought:</i> <ul style="list-style-type: none">• Plato• Aristotle	Written exam (2 hours)	33.3%

		<ul style="list-style-type: none"> • Soul, mind and body <p><i>Existence of God:</i></p> <ul style="list-style-type: none"> • Ontological Argument • Cosmological Argument • Teleological Argument <p><i>God and the World:</i></p> <ul style="list-style-type: none"> • Religious Experience • Problem of Evil <p><i>Theological and Philosophical Developments:</i></p> <ul style="list-style-type: none"> • Nature and attributes of God • Religious language 		
2	Religion and ethics	<p><i>Normative Ethical Theories:</i></p> <p><i>Religious</i></p> <ul style="list-style-type: none"> • Natural Law • Situation Ethics <p><i>Normative Ethical Theories:</i></p> <p><i>Secular</i></p> <ul style="list-style-type: none"> • Kantian Ethics • Utilitarianism <p><i>Applied Ethics:</i></p> <ul style="list-style-type: none"> • Euthanasia • Business Ethics <p><i>Ethical Language:</i></p> <ul style="list-style-type: none"> • Meta Ethics <p><i>Significant ideas:</i></p> <ul style="list-style-type: none"> • Conscience <p><i>Developments in Ethical Thought:</i></p> <ul style="list-style-type: none"> • Sexual Ethics 	Written exam (2 hours)	33.3%
3	Developments in religious thought	<p><i>Insight:</i></p> <ul style="list-style-type: none"> • Augustine • Death and the afterlife <p><i>Foundations:</i></p> <ul style="list-style-type: none"> • Knowledge of the existence of God • The person of Jesus Christ <p><i>Living:</i></p> <ul style="list-style-type: none"> • Christian moral principles • Christian moral action <p><i>Development:</i></p>	Written exam (2 hours)	33.3%

		<ul style="list-style-type: none"> • Pluralism and Theology • Pluralism and Society <p><i>Society:</i></p> <ul style="list-style-type: none"> • Gender and Society • Gender and Theology <p><i>Challenges:</i></p> <ul style="list-style-type: none"> • Secularism • Liberation Theology and Marxism 		
--	--	--	--	--

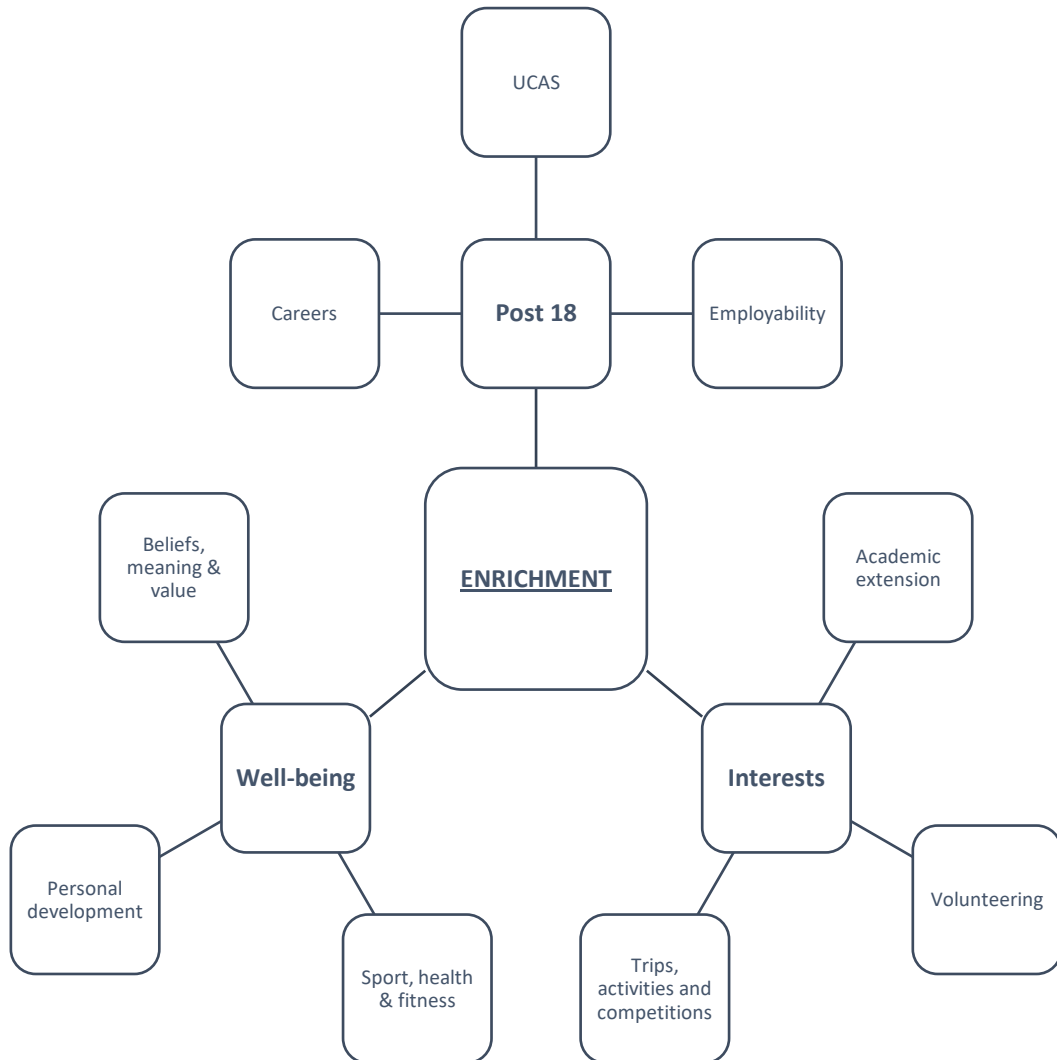
Contact

Miss Ellert

ellertm@blanchelande.sch.gg

ENRICHMENT

Enrichment overview



ENRICHMENT

What is Enrichment?

Enrichment comprises all those elements of Sixth Form life that fall outside required academic studies, but that are essential to deepening and broadening personal development. Some enrichment provision (e.g. Careers (TELOS)/UCAS lessons) are requirements; others are optional and depend on students' interests.

Post 18...

TELOS (from the Greek meaning 'purpose', or 'goal') is the name given to our Sixth Form careers programme. Whether intending to enter the world of work directly after Year 13, or to go to university, students receive the guidance they need through one weekly TELOS lesson, led by Mr Tabel (Head of Careers). Sixth Formers attend weekly twilight talks (4.00 pm – 5.00 pm) from speakers representing a wide spectrum from higher education and the world of work. Not only informative, these sessions are valuable networking opportunities, with students able to directly secure work experience opportunities or even a foothold in a future career. Students are continuously populating their careers profile on the leading careers online platform, Unifrog, to which Blanchelande subscribe all their students.

UCAS

Blanchelande students belong to small tutor groups, enabling them to receive personalised support in selecting the right universities and courses for them. Weekly Post-18 lessons will include sessions such as:

- How to navigate the UCAS system
- Which university?
- Which course?
- Entry requirements
- Fees (including overseas universities)
- How to write an effective personal statement

Every student intending to enter higher education will be able to access the MyUniChoices app which provides extensive information about university courses and application processes, and about the transition from school to university.

Blanchelande will also guide parents in university visits and open days, enabling families to make informed choices.

Our UCAS Coordinator is Mr Miller

Email millerj@blanchelande.sch.gg

Employability

As well as looking at post-18 pathways, students will learn about what employers are looking for. Sessions will include hard and soft skills:

Hard skills:

- Crafting an effective job application
- Matching your skill set to the person specification
- Interview skills: dos and don'ts
- Upskilling, reskilling and CPD
- Running and participating in an effective meeting

Soft skills:

- Communication skills (listening, negotiation, persuasion, writing, understanding body language, etc.)
- Critical thinking skills (adaptability, flexibility, logical thinking, problem solving, research, troubleshooting, etc.)
- Leadership skills (conflict management and resolution, delegation, leadership/management, project management, etc.)
- Attitude to work (confidence, cooperation, courtesy, honesty, respectfulness, etc.)
- Work ethic (attentiveness, dedication, following direction, deadlines, multitasking, planning, etiquette)
- Teamwork (receiving feedback, collaboration, diversity awareness, networking, self-awareness, team building, etc.)

Work experience

Blanchelande College provides purposeful and relevant opportunities for engaging with the working world. We currently work closely with Bright Futures, The Chamber of Commerce, Investors in People, POS, The Institute of Directors (IoD) and the Digital Greenhouse to create placements for the students. This has been an exciting aspect of Sixth Form Life which we will continue to develop and work towards the students gaining accreditation (eg. in the form of a certificate) for their time spent learning new skills.

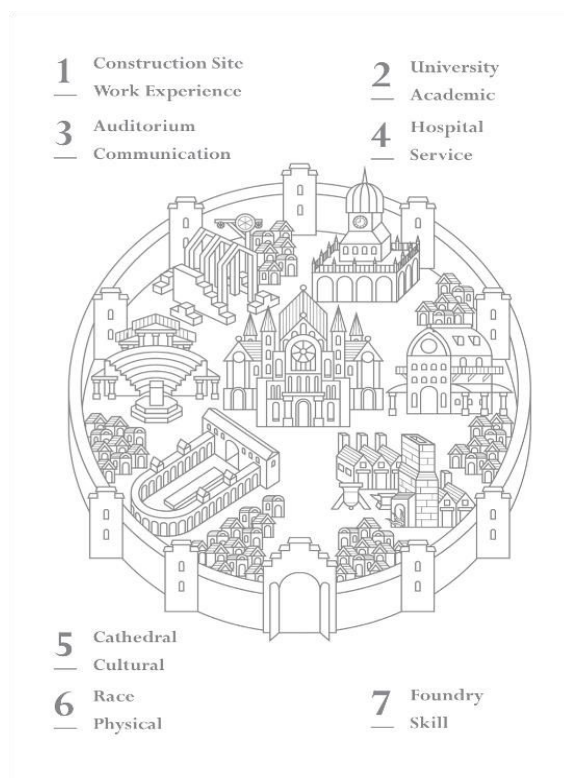
Personal Development

The Sixth Form Diploma

The Blanchelande Diploma runs throughout the school, and Sixth Formers continue with the same model but with a different set of challenges and expectations. The Sixth Form Diploma comprises seven 'pillars' (symbolised in the illustration shown):

- Academic
- Cultural
- Physical
- Communication
- Skill Development
- Work Experience
- Volunteering

Each student will work to achieve their Diploma to suit their personal interests with the encouragement and guidance of their tutor when required.



Personal Development and Citizenship (PDC)

As well as the all-round development being tracked by the Diploma through a range of activities, Sixth Formers also have one lesson of Personal Development and Citizenship (PDC – similar to PSHE in the lower school). Content is delivered by the Head of Sixth Form, members of the Senior Leadership Team, Sixth Form tutors and external speakers, who cover a wide range of topics, skills and activities.

- Year 12: our initial focus is a smooth transition into post-16 study and helping to provide the students with skills for: independent learning, setting and tracking targets and time management. Other topics include: healthy eating, drug and alcohol awareness, relationships and sex education, personal finance and first aid.
- Year 13: the main focus is support and advice in selecting and applying for university places or employment. Other topics include practical advice and sessions on how to revise, exam technique and how to manage peak times along their journey.

Thought and Culture (T&C)

Blanchelande students develop a strong moral sense which is developed at Sixth Form by the opportunity to explore broad philosophical and theological questions. Sixth Formers learn to discuss and debate with enthusiasm and respect for different points of view and belief, promoting tolerance and understanding in the search for truth. While there is a T&C course

outline, the aim is for the sessions to be meaningful for students, and they are welcome to request their own topics.

Topics may include the following:

- Are religion and science compatible?
- Why are there so many religions in the world?
- Is atheism a religion and should we believe in it?
- Can ethics keep up with technology?
- Should we aim for lives that are happy, or rather lives that are meaningful?
- Can modern warfare be ethical?
- Is there such a thing as beauty?

Sport, health & fitness

All students at Blanchelande will be given opportunities for being fit and active. We recognise that sprinting around our beautiful grounds is not everyone's idea of enjoyment. We work to provide opportunities to suit a range of preferences to engage in healthy activities away from the desk and the computer. Students will be able to discuss their use of this time with their tutors.

Interests...

If studies are what you have to do, well-being what you should do, what about what you really want to do? At Blanchelande we encourage students to develop their interests – *interested* students will be *interesting* too.

Academic extension

For success in most A-Level subjects, you will be undertaking personal reading and research, but there are other opportunities for academic extension which will demonstrate a real love for your subjects. Opportunities for academic extension include:

- MOOCs (Massive Open Online Courses)
- UKMT Maths Challenge
- Webinars (e.g. for Philosophy, Candle Conferences webinars, University Webinars)
- Subject-related journals, magazines, websites, blogs, TED talks, etc.
- STEM activities, on and off island
- Academic lectures (eg Gresham College Lectures)
- Summer or weekend enrichment course or conference
- Certificate of Digital Excellence CoDU
- CISI Corporate Finance Certificate

Volunteering

'There is more joy in giving than in receiving.' This principle is at the heart of the volunteering movement. All students will have benefited at some point in their lives from volunteering (i.e. someone giving up their time for no financial gain, such as Scout leaders, cadet leaders, etc.). Another way of talking about volunteering is 'local and global citizenship'.

Opportunities for volunteering include:

- Raising awareness of global issues
- Volunteering within the school, particularly with younger pupils and clubs
- Volunteering is the largest section within the Duke of Edinburgh Award
- Regular visits to residential homes for the elderly
- Community projects around the island

Trips, activities & competitions...

There are great benefits to living on an island like Guernsey, but to make the most of it means getting involved with on-island activities – and planning when you're going to get off and making the most of your time away.

Trips

Fingers crossed that as recovery from the global pandemic eases current travel restrictions, Blanchelande students will have the opportunity for going on off-island school trips, such as ski trips, language trips and other subject-specific trips. Students may also belong to local youth organisations that offer opportunities for off-island trips, sometimes offering financial assistance. It is really important to make the most of these opportunities, to ensure parity of experience with the young people you will be competing with for university and employment places.

Activities

There is a great range of clubs and activities at Blanchelande, some of which are open to all senior school students (with opportunities for Sixth Formers to take a lead) and others that are specifically run for Sixth Formers. Some activities run for a full year or term, while others may be short courses for a few weeks.

Opportunities for activities include:

- School drama productions
- House performance competitions
- Orchestra, choir and ensemble groups
- Duke of Edinburgh Award Scheme – Gold
- Participate in – or help to run – lunchtime and afterschool clubs
- School sports
- Art House Cinema Club
- DIY

- Essential Cookery
- Theatre Club

Competitive opportunities

For all subjects there are opportunities to compete with other students from the Channel Islands, the UK and even across the world. Students need to be prepared to compete against others for future university/apprenticeships/employment. All of these competitive opportunities will provide valuable experience, some will offer amazing prizes and others, the opportunity to travel (COVID permitting!) and to engage on an international forum. We strongly recommend that students enter competitions – there is everything to gain and nothing to lose.

Competitive opportunities include:

- Blanchelande Sixth Form Essay Prize
- Blanchelande STEM Award
- The Student Advisory Board (Bright Futures and POS)
- IoD Directors of Tomorrow
- IoD Leadership Shadowing Scheme
- Independent Schools Association awards:
 - Film & Digital Art Competition
 - Poetry Competitions
 - Shakespeare Monologue Competition



Blanchelande College

Les Vauxbelets,
St Andrews,
Guernsey
GY6 8XY

Tel: 01481 237200

Email: office@blanchelande.sch.gg
www.blanchelande.co.uk