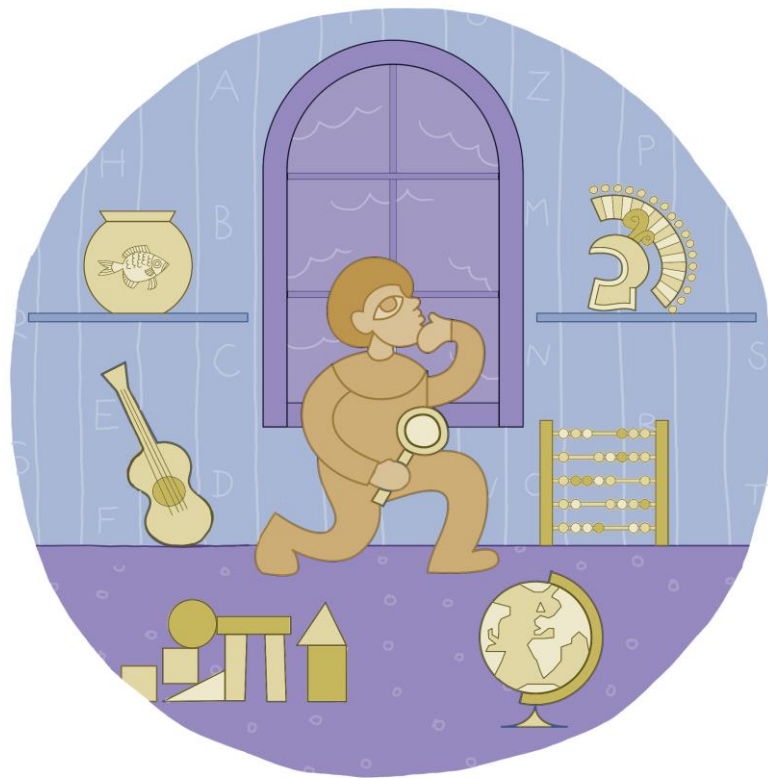




Blanchelande College

# PARENTS' HANDBOOK



## JUNIOR DEPARTMENT

2024-25



# Blanchelande College

## Contents

PRINCIPAL & HEAD OF JUNIORS' WELCOME .....	4
WHO'S WHO AT BLANCHELANDE .....	6
Our management structure .....	6
The Junior team .....	7
Form tutors and subject specialists .....	8
Access to the school building .....	8
THE HERO'S JOURNEY .....	9
The Junior Diploma .....	10
Learning Powers .....	10
Knightly Virtues .....	11
A DAY IN THE LIFE: JUNIORS .....	11
BLANCHELANDE COLLEGE – SEMPER FIDELIS .....	13
Our ethos .....	11
History of the College .....	14
Religious life .....	14
Assemblies .....	14
Christmas production .....	14
Christmas Party .....	14
RESPONSIBILITIES .....	15
Pupil leadership .....	15
Charities .....	15
PASTORAL CARE .....	16
Safeguarding .....	16
Raising a pastoral concern .....	16
Anti-bullying policy .....	16
Behaviour policy .....	17
Attendance and absence .....	17
Medication .....	17
WHAT TO BRING .....	18
FOOD .....	19
Morning snack .....	19



# Blanchelande College

Lunch.....	19
Cooked lunches.....	19
Packed lunches.....	19
Birthday cakes.....	19
THE CURRICULUM.....	20
A liberal education .....	20
Relationships and Sex Education .....	20
Reading.....	21
Homework.....	22
Learning Support .....	22
Reports and parent-teacher meetings .....	22
Educational visits.....	23
EXTRA CURRICULAR .....	24
SPORT & BEING ACTIVE .....	24
WoW Challenge .....	25
TRANSITION INTO OUR SENIOR SCHOOL.....	26
SUPPORTING THE COLLEGE.....	27
Becoming a benefactor.....	27
Parent, Teacher & Friends Association (PTFA) .....	25
PARENTAL INFORMATION .....	28
Fees and extras.....	28
Notice of withdrawal.....	28
Policies .....	28
Complaints.....	28



# Blanchelande College

## PRINCIPAL & HEAD OF JUNIORS' WELCOME

Dear Parents,

Welcome to Blanchelande's Junior department.

Our team of dedicated, experienced teachers and Learning Support Assistants (LSAs) are here to provide the very best education for your child. The information in this handbook will support you and your child through their time in the Junior School.

We pride ourselves on giving every child a first-class education which develops the 'whole child'. The children's learning and personal development are nurtured at every opportunity.

- We teach a 'liberal arts' curriculum which imparts knowledge and cultural understanding (the 'best that has been known and thought') fostering lateral thinking and cultural literacy.
- Our broad and enriching curriculum enables each child to discover their element; increasingly as they move through the Junior years, pupils are taught by subject specialists, including for Languages (French and Latin), Music, History, Science, Physical Education, Religious Education, Geography, and Art and Design Technology.
- Your child's happiness and welfare is our priority. Our team of Junior form tutors and subject specialist teachers are available to support your child at every step of the Junior phase.
- We have the very highest expectations in *everything* the children do. We strive for excellence in homework, personal conduct, sport, extra-curricular or academic achievement.
- Compared to many schools, we keep our class sizes small. This personal approach ensures that every child is nurtured so they can reach their full potential and make excellent progress in their academic learning and personal development.
- The all-round flourishing of your child will be tracked by our unique Hero's Journey Diploma programme which encompasses personal development as well as six different areas of essential activity. We want every child to get the most from their time in Blanchelande's Junior department so that they are well-prepared to thrive further up the school and in their future lives.

We look forward to working with you and your child during their time in the Juniors.

Alexa Yeoman,  
Principal

Mark Allison,  
Head of Juniors



Blanchelande College



# Blanchelande College

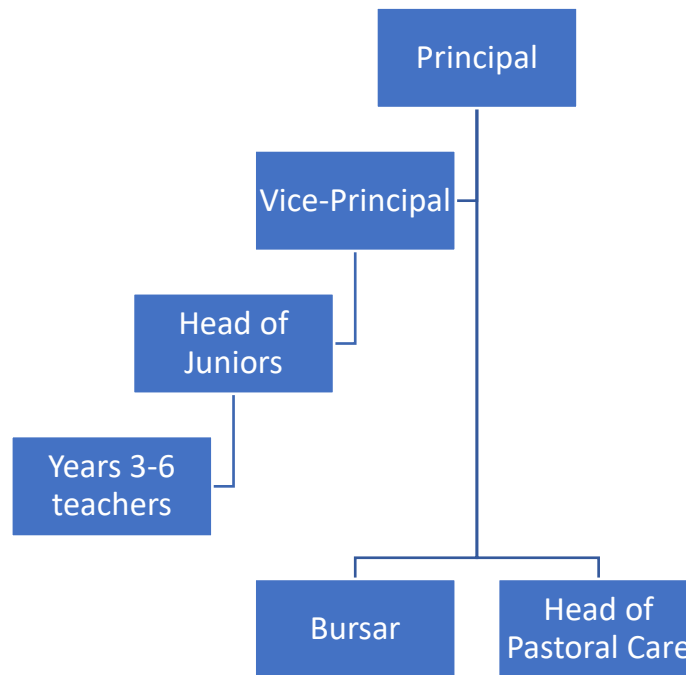
## WHO'S WHO AT BLANCHELANDE

### Our management structure

Blanchelande's Senior Management Team (SMT) consists of the Principal (Alexa Yeoman), Acting Vice-Principal (Andrew Manning), Bursar (Mark Lewis) and Head of Pastoral Care (Hugh Tabel). These roles have oversight over the whole College.

The College is then divided into Phases: Infants (R-Y2), Juniors (Y3-6), Lower Seniors (Y7-9), Upper Seniors (Y10-11) and Sixth Form (Y12-13). Each has a Head of Phase who oversees the day-to-day running of their year groups and the well-being of the children in their section of the school. The Head of Phase works closely with the Form Tutors in their Phase.

The Head of Juniors is Mark Allison.



### Communication

Parents are welcome to contact the member of staff they feel is most appropriate, but for day-to-day issues concerning their child, please start by contacting the Form Tutor by email, telephone or in person.

All staff contact details are available on the Contact Us page of the website: click [here](#).

Junior parents will receive letters by email via the school office. Parents in Years 3 and 4 may receive reminders and messages from form tutors on *Class Dojo*, and parents in Years 5 and 6 will receive reminder and messages on their child's *Microsoft Team* account. If you would like to send us a messages please ensure it is by email.



# Blanchelande College

## The Junior team

Led by Head of Juniors, Mark Allison, the Junior department consists of a team of teachers and Learning Support Assistants.

Our staff are approachable and always available to listen and assist you and your child. You can see our team photos on the school website [here](#).

### Year 3

Tricia Lewis – Year 3 form tutor and PE teacher [lewist@blanchelande.sch.gg](mailto:lewist@blanchelande.sch.gg)

### Year 4

Melanie Bisson - Year 4 form tutor and Junior teacher [bissonm@blanchelande.sch.gg](mailto:bissonm@blanchelande.sch.gg)

Rebecca Reid – Year 4 form tutor and Geography teacher [reidr@blanchelande.sch.gg](mailto:reidr@blanchelande.sch.gg)

### Year 5

Katie Beavan – Year 5 form tutor and Art/DT teacher [beavank@blanchelande.sch.gg](mailto:beavank@blanchelande.sch.gg)

Steve Hutchison – Year 5 form tutor and Mathematics teacher  
[hutchisons@blanchelande.sch.gg](mailto:hutchisons@blanchelande.sch.gg)

### Year 6

Mary Carey – Year 6 form tutor and English teacher [careym@blanchelande.sch.gg](mailto:careym@blanchelande.sch.gg)

Katie Whitford - Year 6 form tutor and French teacher [whitfordk@blanchelande.sch.gg](mailto:whitfordk@blanchelande.sch.gg)

## Specialist Junior Teachers

Mark Allison – Computing teacher [allisonm@blanchelande.sch](mailto:allisonm@blanchelande.sch).

Belinda Davis – Music teacher [davisb@blanchelande.sch.gg](mailto:davisb@blanchelande.sch.gg)

Jill Etheridge – Classics teacher [etheridgej@blanchelande.sch.gg](mailto:etheridgej@blanchelande.sch.gg)

Andy Manning – PE teacher [manninga@blanchelande.sch.gg](mailto:manninga@blanchelande.sch.gg)

Zach Masterton-Pipet – PE teacher [mastertonpipetz@blanchelande.sch.gg](mailto:mastertonpipetz@blanchelande.sch.gg)

James Miller – Y6 History teacher [millerj@blanchelande.sch.gg](mailto:millerj@blanchelande.sch.gg)

Gareth Rees – Y5 and 6 History teacher [reesg@blanchelande.sch.gg](mailto:reesg@blanchelande.sch.gg)



# Blanchelande College

Hugh Tabel – Y6 Science teacher [tabelh@blanchelande.sch.gg](mailto:tabelh@blanchelande.sch.gg)

Julia Thornton – Y5 Science teacher [thorntonj@blanchelande.sch.gg](mailto:thorntonj@blanchelande.sch.gg)

Victoria Wallace – Y6 Science teacher [wallacev@blanchelande.sch.gg](mailto:wallacev@blanchelande.sch.gg)

Joanna Way – Year 6 Mathematics teacher [wayj@blanchelande.sch.gg](mailto:wayj@blanchelande.sch.gg)

David Lee – Year 6 Mathematics teacher [leed@blanchelande.sch.gg](mailto:leed@blanchelande.sch.gg)

## Junior Learning Support Assistants (LSAs)

Belinda Festivo, LSA and ELSA [festivob@blanchelande.sch.gg](mailto:festivob@blanchelande.sch.gg)

Nikki Rihoy, LSA [rihoyn@blanchelande.sch.gg](mailto:rihoyn@blanchelande.sch.gg)

Heidi Garner, LSA [garnerh@blanchelande.sch.gg](mailto:garnerh@blanchelande.sch.gg)

Samantha Bisson, LSA [bissons@blanchelande.sch.gg](mailto:bissons@blanchelande.sch.gg)

## Form Tutors and Subject Specialists

In the Junior School your child will be taught by more than one teacher: the form tutor and specialist subject teachers. How much subject special teaching will depend on the age of the children.

The Year 3 and 4 children will spend most of their day with their form tutor who will teach the majority of the curriculum. For certain lessons, they will be taught by a subject specialist, e.g., PE, Music and French.

The older Year 5 and 6 children are taught the majority of their lessons by specialist subject teachers with their form tutor typically teaching them one or two subjects.

The form tutor will likely be the first port of call if you have any questions to ask or would just like a chat. As they see your child the most, they will be able to help you. The best way to contact them is either by email (contact details [here](#)) or at the start or end of the day.

## Access to the school building

Please note that parents are not permitted to enter the school building unaccompanied, other than to drop off their child at the Rosaire Hall for breakfast club, to attend their child's class assembly, or to come to the School Office. This is not at all because we are an unfriendly school, and is entirely to keep the children safe. If you, for instance, need





# Blanchelande College

to collect your child for an appointment, please go to the office and your child will come up to meet you.

## THE HERO'S JOURNEY



*Above: The Hero's Journey mural at Blanchelande College*

An important part of a Blanchelande education is the 'Hero's Journey', a recognised story theory (see diagram, right) that can be found throughout our culture (stories, films, games) and can be applied to our own lives.

Blanchelande has its own mural of the Hero's Journey (above), by our Design Director Hugh Rose. This mural dramatises the journey from the familiar world to the unfamiliar world (an adventure), a journey on which the main character develops from a child into an independent, gifted and resilient contributor to society.

Throughout their time at the school, you will see this theory of personal development being integrated in a number of ways. In Years 3-6, the full breadth of this vision is encapsulated by the Junior Diploma.



# Blanchelande College

## The Junior Diploma

The Blanchelande Junior Diploma is our inspirational and motivational framework which fosters and celebrates children's diverse development. The Diploma:

- Ensures a Blanchelande education encompasses the whole child, not just one area
- Promotes the intellectual virtues embodied in the 'Learning Powers'
- Promotes good moral conduct embodied in the Knightly Virtues

Progress in the Diploma is measured through the following six categories:

1. Academic
2. Cultural
3. Physical
4. Communication
5. Skills – The Learning Powers (see below)
6. Knightly Virtues (see below)

Each pupil's planner contains full details of the Diploma as well as a tracking page where achievements are recorded and signed off. Over the course of a full year the Diploma tells pupils, parents and teachers the extent to which each child is developing their whole person.

## Learning Powers

The Junior Journey instils a spirit of determined adventure at the beginning of each child's educational journey. On this journey, children will need to use their **learning powers** to help them be the best learner they can possibly be. These powers are first introduced in the Infant department (as part of the Infant Quest), so will be increasingly familiar to pupils who move up from Infants into Juniors.

The Seven Learning Powers are:

1. Concentrate
2. Keep Going
3. Be Imaginative
4. Remember
5. Work Together
6. Be Inquisitive
7. Have a Go

Pupils practise these every day, and teachers make reference to them in the course of lessons and in their feedback to parents.



# Blanchelande College

## Knightly Virtues

The Knightly Virtues is part of a character development [programme](#) pioneered by the University of Birmingham. The children are taught in a variety of contexts how the virtues can enhance character development and promote positive social skills. These virtues are explicitly taught within our PSHE programme and are modelled by children and staff. Although these virtues can be tricky to measure there are many aspects of school and home life where children can display such virtues, and living them out in concrete situations contributes towards the completion of the Junior Diploma.

In the Trinity Term, at our Prize Giving ceremony, children receive their Diploma Certificates.



## A DAY IN THE LIFE: JUNIORS

7.45 am – 8.45 am	Mrs Carre welcomes early birds for breakfast club!
8.00 am-8.10 am	Children arriving early go to the Computing room to read
8.10 am	The Primary playground opens in the Quad for the children
8.30 am	Registration in form rooms and our Daily Act of Worship
9.05 am	Lessons 1, 2 and 3*
10.50 am	Morning break time on the field in fine weather



# Blanchelande College

11.15 am	Lessons 4 and 5*
12.25 pm	Junior lunchtime in Rosaire Hall. Children may attend a club or play in the Primary playground (or on the playing fields in fine weather)
1.20 pm	Registration
1.25 pm	Lessons 6, 7, 8 and 9*
3.30 pm	Home time – the school day finishes with a prayer and each child says goodbye individually to their teacher
3.30 pm – 5.30 pm	After School Club begins in Rosaire Hall

\* A single lesson lasts 35 minutes and a double lasts 1 hour and 10 minutes. Lessons may be in the child's form room or in a specialist teaching room (e.g. for Music, Art, or Science)



# Blanchelande College

## BLANCHELANDE COLLEGE – SEMPER FIDELIS

The motto of Blanchelande College is ‘Semper Fidelis’ meaning ‘Always Faithful’.

### Our mission

- Blanchelande College, as a Catholic school, seeks to be a family always faithful to the example of Our Lord Jesus Christ, learning to become all that God wants us to be.

### Our aims

- That the Blanchelande family experiences a safe environment where each young person flourishes.
- That, by fostering their gifts and talents, each pupil develops their personal vocation.
- That the intellectual life of inquiry is directed by the search for truth, beauty and goodness.
- That pupils learn to communicate with accuracy, logic and style.
- That pupils engage in service and charity, helping others and preserving God’s creation.
- That pupils extend their cultural horizons and have opportunities to experience and participate in the arts.
- That pupils nurture their health, growing in endeavour and enjoyment of true leisure.

### Three Rules for Life

- Use your talents to pursue what is good.
- Treat other people as you would like them to treat you.
- Be tolerant and open to respectful debate.

***‘Lord, let me grow into the person you want me to be.’***



# Blanchelande College

## History of the College

For the history of Blanchelande College – which stretches back to the High Middle Ages – click [here](#).

## Religious life

Children participate in some form of collective act of worship each day, either as a class, a year group, a department, jointly with Juniors or as a whole College. These acts of worship, in the Roman Catholic tradition, may be led by pupils, teachers or a visiting chaplain from the local parish. The whole school celebrates Mass in the hall several times a term. Confessions, for Catholic pupils, are offered during Advent and Lent. Members of the Junior choir attend the Christmas carol service in the final week of the Michaelmas Term.

From Year 3, children may be prepared for the sacraments of First Confession and First Holy Communion. These classes take place outside normal lesson time. To register your interest, please email the RE Coordinator (Primary), Mrs Gaudion.

Email [gaudiona@blanchelande.sch.gg](mailto:gaudiona@blanchelande.sch.gg)

## Assemblies

Infants and Juniors gather for Primary assemblies on Wednesdays at 11.50 am – 12.25 pm. Often, a class leads this assembly and parents of the relevant class are invited to attend.

It is usually possible to take photographs of your own child at these assemblies, but care must be taken not to photograph other children. We also ask that no photographs are posted online. Occasionally an announcement may be made asking parents to take no photographs during the assembly. However, after it has finished an opportunity to take an individual picture may be provided.

## Christmas production

Junior participate in the Primary Christmas production. Parents are often asked to support the production through helping learn lines, and provide pieces of costume. The production is usually performed twice, once in a morning and again in an evening, to enable parents and grandparents to attend at a convenient time.

## Christmas Party

In the last week of the Michaelmas term, children have a Christmas Party Day where they can wear mufti, play games and have a Christmas lunch. Please note that all children



# Blanchelande College

have the Christmas lunch (there are no packed lunches on this day) and there is a charge of around £5 per child.

## Primary Prize Giving

At the end of June, parents are invited to our Prize Giving Ceremony which takes place in school. It is a celebratory day where the Junior children are recognised for their efforts, hard work, character development and sporting or artistic achievements.

## RESPONSIBILITIES

### Pupil leadership

In Years 3, 4 and 5 children are given roles of responsibility ('monitors') within their classroom. In Year 6, as the children are at the top of the Junior school, children take on wider roles of responsibility within the Primary school. These include being a buddy to an infant, an art monitor or working as a librarian and are an important and integral part of the day to day running of the school.

We encourage our pupils to demonstrate their leadership qualities. Each class has a School Council Representative and by the time the children are in Year 6 a range of leadership roles are open to them.

The Head Boy and Head Girl are important roles within the school and this role demands a range of skills and attributes that can inspire all the children. Alongside our Heads, are the House Captains and Vice-House Captains who fulfil a range of activities including the promotion of house competitions and house events.

### Charities

Junior children are given opportunities through the year to support a range of charities that express the school's Christian ethos. Harvest, the Swimathon, Carol Singing and our fun Lent charity fundraiser event are all ways the children show their virtues of compassion, service, humility and gratitude.



# Blanchelande College

## PASTORAL CARE

Blanchelande staff are committed to the well-being of every child at the school, and the partnership between home and school is essential.

### Safeguarding

Safeguarding is defined in law as, 'protecting children from maltreatment; preventing impairment of children's health or development; ensuring that children grow up in circumstances consistent with the provision of safe and effective care; and taking action to enable all children to have the best outcomes.'

Responsibility for safeguarding lies with the Principal and is overseen by the Designated Safeguarding Lead, Hugh Tabel (Head of Pastoral Care) and Kelly Faye (Deputy Head of Pastoral Care). All members of staff at Blanchelande have a responsibility for reporting any safeguarding concerns to the Designated Safeguarding Lead (DSL). The College will liaise closely with parents and external agencies, as appropriate.

For the College's full Safeguarding policy, please click [here](#).

### Raising a pastoral concern

If you are concerned that your child is being bullied, or is having difficulties relating to other children, or you notice a worrying change in their behaviour or attitude, please contact the College.

You may wish to contact one of the following:

- Your child's form tutor
- Pastoral Deputy Head of Pastoral Care, Kelly Fay, [fayk@blanchelande.sch.gg](mailto:fayk@blanchelande.sch.gg)
- Head of Juniors, Mr Allison [allisonm@blanchelande.sch.gg](mailto:allisonm@blanchelande.sch.gg)
- If the matter concerns safeguarding/ child protection, the Designated Safeguarding Lead and Head of Pastoral Care, Mr Tabel [tabelh@blanchelande.sch.gg](mailto:tabelh@blanchelande.sch.gg)
- The Principal, Mrs Alexa Yeoman [principal@blanchelande.sch.gg](mailto:principal@blanchelande.sch.gg)

### Anti-bullying policy

Blanchelande has a strict no-bullying policy, and we recognise that bullying is damaging to both the victim and the perpetrator. If you have a concern about bullying, please immediately raise it with the College. Our anti-bullying policy is on the [policies page](#) of our website.





# Blanchelande College

## Behaviour policy

Blanchelande has a clear policy to promote good behaviour and discourage poor behaviour. Positive incentives are provided through the merit system. Demerits are introduced from Year 5, but are rarely required. Our whole-school behaviour policy is on the [policies page](#) of our website.

## Attendance and absence

Regular school attendance is vitally important for every child to flourish.

- **Planned absences:** Parents should email the Primary Secretary PA one week in advance stating the reason and duration of the planned absence. The recipient will aim to reply within 48 hours and file the request.

**Email** [andradek@blanchelande.sch.gg](mailto:andradek@blanchelande.sch.gg)

- **Unplanned absences:** If for any unforeseeable reason (illness, travel difficulties, etc.) a child cannot attend school, parents should telephone the College Office, or email the College on the first morning of the absence.

**Email** [office@blanchelande.sch.gg](mailto:office@blanchelande.sch.gg)      **Tel** 237200

- **Sickness:** Any child who is unwell during the school day will be sent to the Medical Room adjacent to the College Office. Parents will be contacted should collection be required, or permission for a specific medical treatment.
- **Return to College after sickness – the 48 hour rule:** A child who has been off-school with a contagious illness must be *symptom-free for 48 hours* before returning to school. Any child returning to College prematurely will be sent home.

## Medication

The College will always try to support families in the administering of routine medication. If your child is on medication, please contact the office, to discuss their requirements, copying in the Head of Juniors, Mr Allison.



# Blanchelande College

## WHAT TO BRING

Here's what Year 3-6 pupils need to bring with them:

- Seasonal uniform (for uniform list, [click here](#))
- Bag
- Planner (containing daily reading record)
- Water bottle
- Packed lunch (if required)
- Morning snack
- Homework (if due)
- Stationery (see list below or click [click here](#))

### Junior stationery list Year 3-6 stationery list

- Generously sized pencil case
- Handwriting pen or fountain pen (Lamy fountain pen recommended); spare ink cartridges
- Blue free-flowing pens (worth buying in bulk; fibre-pipped Berol/Staedtler are recommended - *not biros*)
- Six HB pencils (worth buying in bulk)
- Pencil sharpener
- Rubber
- 30cm ruler (can be folding)
- Set of colouring pencils and felt tips
- Glue stick
- Scissors
- 180-degree protractor (Y5-6 only)
- Headphones with a standard 3.5mm plug - not expensive, please

The following items are kept in school:

- Art apron
- PE kit (ready for the days when PE is timetabled)



# Blanchelande College

## FOOD

### Morning snack

As well as a water bottle which they can drink from throughout the day, each child should come to school with a healthy snack for morning break. Fruit, crackers and nut-free cereal bars are recommended (no nuts, crisps or chocolate, please!).

### Lunch

Lunchtime at Blanchelande is one hour which gives children plenty of time to eat their lunch and then enjoy a run-around or a lunchtime club.

Parents can choose whether their child has a freshly cooked school lunch or brings their own packed lunch to school. Whichever they choose, children eat together (cooked and packed lunch children are not seated separately), supervised by teaching and lunchroom staff.

Due to food preparation regulations, we are not permitted to heat up food brought in from home.

### Cooked lunches

Blanchelande strives to provide healthy, tasty and nutritious cooked lunches. The menu runs on a two-week cycle, revised on a termly basis. Vegetarian options are always available. Children do not need to be signed up for a cooked lunch every day, but it must be booked on [Magic Booking](#). For the current menu, see our school lunch page [here](#).

For further information, please contact Mrs Low.

Email [curles@blanchelande.sch.gg](mailto:curles@blanchelande.sch.gg)

### Packed lunches

At Blanchelande we trust parents to pack a healthy and nutritious packed lunch for their child. Please do not bring in any food containing nuts, or fizzy drinks, etc.

### Birthday cakes

At Blanchelande we approve of celebrations and that it is only right for children to feel special on their birthday, by wearing a birthday badge and being sung to. While there is no obligation to do so, many children like to bring a treat in to share with their classmates. If this is the case, we would ask that a cake (or fairy cakes) is brought in, rather than packets of sweets or chocolate. Please liaise with the class teacher at least 72 hours beforehand so that you can be informed of the number of children in the class and any children with special dietary requirements.



# Blanchelande College

## THE CURRICULUM

### A liberal education

Blanchelande's Junior School offers an excellent all-round education through its liberal arts curriculum that privileges the acquisition of core knowledge and subject-mastery.

Juniors broadly follow the English National Curriculum studying English, Maths, Science, RE, French, Latin, Geography, History, Art, Design Technology, Music, Cookery, PSHE, PE and Games. Lessons are taught by a mixture of class and specialist teachers, and with about twenty pupils in each class, pupils can participate in lively discussions while receiving individual support. The curriculum strives to both stretch the academically gifted and support those with particular learning needs. Our PE staff and external coaches ensure that our pupils enjoy plenty of physical activity and sport, from tag rugby to netball and swimming. Our goal is to craft a curriculum that brings out the potential of each individual child.

### Curriculum Maps

You can see our year group curriculum maps by clicking on the links below:

[Year 3](#)

[Year 4](#)

[Year 5](#)

[Year 6](#)

Children are often visited by guests who bring their knowledge and expertise to further enhance the curriculum. The curriculum is brought to life by the some of the visits to places of interest on the island such as Castle Cornet, Moulin Huet and the Guilles-Alles Library.

### Relationships and Sex Education

At Blanchelande, RSE does not replace the role of parents. It is vitally important that from a young age, children are able to have an open and relaxed dialogue, without undue embarrassment, about matters relating to their bodies, sexuality and relationships. As a school, our role is to support parents in their unique vocation as parents; we endeavour to inform you whenever we are about to deliver a lesson or lessons about RSE, and respect the right of parents to withdraw their children from RSE lessons should they choose to do so.

The RSE module in Years 5 and 6 is called 'Me, My Body, My Health'. Topics include:

#### Year 5

- About the need to respect and look after their bodies through what they wear, what they eat and what they physically do.



# Blanchelande College

- What the term puberty means, when they can expect puberty to take place and understand that puberty is part of God's plan for our bodies.
- The correct naming of genitalia.
- What changes will happen to boys during puberty.
- What changes will happen to girls during puberty.

## Year 6

- The similarities and differences between people that arise as they grow and mature, and that by living and working together ('teamwork') we create community.
- The unique growth and development of humans, and the changes that girls and boys will experience during puberty.
- The need to respect their bodies as a gift from God to be looked after well, dressed appropriately with the need for self-respect and boundaries.
- How to make good choices that have an impact on their health: rest and sleep, exercise, personal hygiene, avoiding the overuse of devices, etc.
- How a baby grows and develops in its mother's womb.
- The nature and role of menstruation in the fertility cycle, and that fertility is involved in the start of life.

All topics are approached in a sensitive and age-appropriate way and are in harmony with the school's Catholic ethos. Gender-specific puberty lessons are taught in separate boy/girl groups as we have found this to be the most considerate way of delivering the content. The lesson delivery and resources are in line with Blanchelande's RSE policy which can be read [here](#).

## PSHE Parent Portal

You may view the resources and lesson plans we teach by logging into the [Ten Ten parent portal](#) with the username: *opp-blanch-6* and password: *rse-parent-orange*

## Reading

We want every child to become a confident, fluent reader with a love of books. Each year the children celebrate Book Week (Hilary Term) with a visiting author. We encourage you to make regular visits to the public library; each child in the Junior school is expected to have a library card for the Guille-Alles library.

Junior children are individually heard reading aloud within their weekly library lesson and in groups within their English lessons. Each child will have a library book which is taken home each day; we ask parents to spend ten minutes each evening listening to their child read, and to record this in the Junior Planner.



# Blanchelande College

Click the following lists for recommended reading lists:

## Reading lists

- [Year 3](#)
- [Year 4](#)
- [Year 5](#)
- [Year 6](#)

## Homework

Homework is set for all Junior children with an allowance of a week given to complete set tasks.

Year 3 and 4	<ul style="list-style-type: none"><li>• Daily reading</li><li>• Spellings (staggered based on reading level)</li><li>• Weekly Maths activity (differentiated)</li></ul>
Year 5 and 6	<ul style="list-style-type: none"><li>• Daily reading and recording in reading log- (in the planner)</li><li>• Spellings (differentiated)</li><li>• English grammar</li><li>• Reading comprehension</li><li>• Weekly Maths activity (differentiated)</li><li>• French or Classics</li></ul>

## Learning Support

Learning Support is available for any child with a special educational need. Support may be given either through in-class differentiation, or through one-to-one lessons, provided by a learning support specialist. One-to-one lessons are charged as an extra.

## Reports and parent-teacher meetings

Parents receive the following formal feedback during the course of the year.



# Blanchelande College

## Michaelmas Term

- Parents evening with form tutor (late October)
- Written report (end of term)

## Hilary Term

- Parents evening with subject teachers (after half term)

## Trinity Term

- Full written report (end of term)

## Educational visits

Infants broaden their experience through a number of educational trips. These change each year depending on topics being learnt and opportunities available, but often include:

- Guille-Alles Library
- Castle Cornet
- Guernsey Museum
- Sailing
- Sea swimming

Generally, there is no additional charge for these educational visits. A modest additional charge is made for Activity Week in June.

Blanchelande has its own fleet of minibuses.



# Blanchelande College

## EXTRA CURRICULAR

Junior children have a busy school day and need unstructured playtime, but we also provide appropriate opportunities for them to develop hobbies and interests outside the curriculum.

These take place during lunchtime (without charge) and change from term-to-term. The list of activities is published each term but examples of past activities include:

- Ancient Greek Club
- Art Club
- Stamp Club
- French Club
- Coding Club
- Drama Club
- Robotics Club
- Cricket / Football / Netball Clubs

For the latest clubs list, see our extracurricular page [here](#).

## SPORT & BEING ACTIVE

Blanchelande is blessed with extensive outdoor space to be active at various times throughout the school day, within and outside lesson times. Facilities include the outdoor courts, large sports pitches, the Junior playground, and an outdoor learning and forest area.

Activity week in the Trinity term, during which a wide range of activities is offered. In the past these have included sailing, horse-riding and a trip to Herm.

PE lessons are taught by PE specialists and activities include:

- Swimming (at Beau Sejour)
- Football, Tag Rugby and Cricket
- Gymnastics and Dance
- Athletics

There is plenty of opportunities for children to get involved in sporting competitions. We have a netball, tag rugby and football team which regularly compete at home or away against other island schools.

### The Blanchelande Blast

The juniors start some mornings with the Blanchelande Blast: a 10-minute run or walk, at their own pace, around the beautiful school grounds. This fun exercise is a great way to energise the children and get them ready for a day of learning. It is also a social occasion where the children can catch up with friends or chat with the teachers. No PE kit or trainers are needed.





# Blanchelande College

## WoW Challenge

We are proud to take part in the Living Streets WoW Challenge – our daily walk to school initiative. The WOW challenge asks children to walk or scoot to school at least once per week, every week. Children will log how they travel to school each day on their classroom interactive Travel Tracker and if they meet the target each month, they will be rewarded with a WOW badge – it's as simple as that!

Blanchelande College promotes using active travel modes to get to school on a regular basis as a means of meeting physical activity guidelines and reducing traffic congestion and pollution.

## ENRICHMENT

As mentioned, our junior children perform in class assemblies, go on educational trips and enjoy listening to a range of guest speakers. Throughout the year children also participate in a range of annual enriching activities and events.

Michaelmas Term	<ul style="list-style-type: none"><li>• Head Boy and Girl, House Captains and Vice-House Captains, and School Council election (2 children are elected from each class and attend meetings throughout the year)</li><li>• Roles of responsibilities initiated</li><li>• Harvest festival</li><li>• Year 6 De Putron Challenge – general knowledge competition</li><li>• Swimarathon</li><li>• Christmas production</li><li>• Christmas party</li><li>• Visit to Residential home –Selected children sing and present cards to residents.</li></ul>
Hilary Term	<ul style="list-style-type: none"><li>• Eisteddfod</li><li>• Year 6 Bikeability</li><li>• Book week - Daily activities to celebrate reading and books in a variety of ways. This includes a visit from an author, a dress up as a book character day and a competition.</li><li>• Internet Safety Week</li><li>• British Science week</li><li>• Lent fundraising activity</li></ul>
Trinity Term	<ul style="list-style-type: none"><li>• Residential Trips: Dorset and Y3 and Y4 to Herm, Year 5 to Jersey and Year 6 to Hooke Court.</li><li>• Activity week – Daily activities</li><li>• Sports Day</li></ul>



- |  |  |
|--|--|
|  | <ul style="list-style-type: none"><li>• Speech day/prize giving</li><li>• Transition morning – all pupils spend a morning in their new class</li></ul> |
|--|--|

## TRANSITION INTO OUR SENIOR SCHOOL

All children attending Blanchelande in the Junior department have a place reserved for them in Year 7. There is no need for them to pass an entrance test. Pupils in Year 6 will take an assessment to evaluate their academic attainment and provide the school with data for setting and streaming in Year 7.

In the summer term Year 6 pupils enjoy two transition days along with other pupils from other primary schools who are joining the College in our senior department. As part of this process pupils will complete a Pupil Passport; this gives our Pastoral Team helpful information about interests, likes and dislikes, etc. As part of the transition process each student is assigned a mentor from Year 9 who will be a guide throughout their first year at Blanchelande.

An Information Evening for parents is held around the same time as the transition days.



# Blanchelande College

## SUPPORTING THE COLLEGE

As Blanchelande parents you already support the College in the most important way; thank you for entrusting the education of your son or daughter to Blanchelande.

### Becoming a benefactor

Blanchelande College is a not-for-profit charitable organisation. The Trustees and Governors of the College offer their time as volunteers, without remuneration. Any surplus generated by the College is reinvested in the estate and educational provision. As such, the College welcomes the support of families and members of the community who would like to donate time, funds or material gifts to benefit the College. Should you wish to support the College in this way, please contact the Principal.

**Email**      [principal@blanchelande.sch.gg](mailto:principal@blanchelande.sch.gg)

### Parent, Teacher & Friends Association (PTFA)

Blanchelande's PTFA is run by a committed group of volunteers and coordinates fundraising and community events. The PTFA has its own website:

<https://blanchelandeptfa.co.uk/>

The PTFA raises essential funds for school resources, and in recent years has enabled many improvements including:

- Playground furniture for the Infant and Junior playgrounds
- Staging for the Drama studio
- Outdoor table tennis tables
- Hockey goalkeeper kit
- A Slinger tennis machine and balls
- Refurbishment of Science laboratories
- Picnic benches
- Basketball stands
- A catering van

The PTFA Committee is always keen to welcome further volunteers and committee members. The time commitment is very much based on what each parent can give. To express your interest, please send the committee an email.

Email: [ptfa@blanchelande.sch.gg](mailto:ptfa@blanchelande.sch.gg)



# Blanchelande College

## PARENTAL INFORMATION

### Fees and extras

For information regarding fees and extras for the current academic year, click [here](#). Parents receive one full term's notice of changes to fees; this is normally given at the close of the Hilary term with effect from the following September.

### Notice of withdrawal

In the event of withdrawal of a pupil from the school, a full term's notice in writing must be given to the Principal. In the absence of such notice, one term's fees is payable in lieu.

### Policies

All statutory policies are available on the policies page of our website [here](#).

### Complaints

We hope that you will always be able to informally resolve any cause for dissatisfaction through a meeting with the member of staff concerned, or with the Principal. However, should you wish to make a formal complaint, our Complaints policy is available on the policies page of our website [here](#).